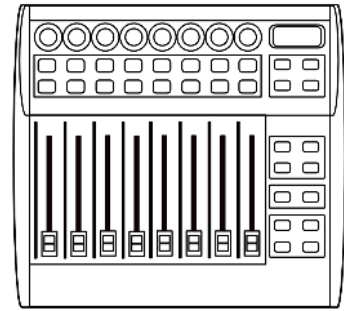


SIGABORT BCF XL CONTROL SURFACE SCRIPT

FUNCTION

This script adds dynamic functionality to the BCF2000 making it an essential MIDI controller for Ableton Live



COMPATIBILITY

The BCF_XL script provided is compatible with Ableton Live 9.6 and higher, please refer to the website before upgrading your Live Installation to ensure compatibility. We will continue to update our scripts for all versions of Live 9, all updates will be sent automatically to the email address used when purchasing.

PrEDITOR & LAUNCHSYNC

The BCF_XL script is firstly compatible with our PrEditor Mapping Utility which allows you to configure the exact order of parameters that are mapped when in focus of the Device Control Scene of the script. - [MORE DETAILS](#)

In addition the BCF2000 can be synced with other supported controllers by way of our LaunchSync Series of MaxforLive devices, a simple way of adding Fader and Encoder control to an Ableton Push or Novation LaunchControl - [MORE DETAILS](#)

INSTALLATION

Download the provided ZIP file and unzip the contents to your hard-drive.

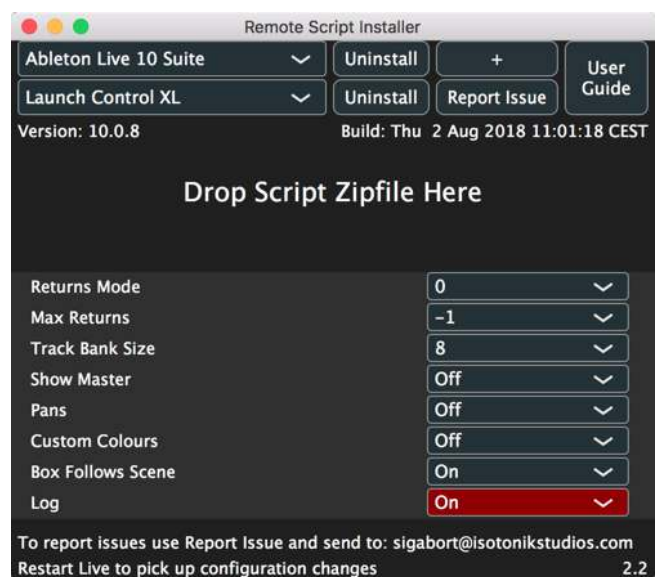
Open the provided Isotonik Remote Script Installer.pkg or .exe and follow the steps indicated by the installer, this will then place the Remote Script Installer within your applications.

Within the installer window select the version and location of your Live installation, click the + button to Add any custom location of Live. To install any script simply drag the zip file for the script onto the indicated area.

By selecting an installed script you can also change the configuration as detailed later in this document.

The Remote Script Installer also has a button that's linked to the location of the User Guides on your Hard-drive.

Finally we've provided a Report Issue option that will produce the files that we would need in order to support you should anything not be working as you'd expect. Please see the end of this manual for how to report any issues and request support



OPERATION

The high level operation of the controller can be switched between two modes: Locked and Free.

This is determined by the Preset entry in the Isotonik Remote Script Installer that is provided with the installation.

Locked Mode - Preset = 0

In this mode the preset controls on the BCR are disabled and it is not possible to change presets whilst the controller is in operation.

This mode is enabled by setting a value of 0 in preset.txt.

Free Mode - Preset = 1-32

This mode allows you to change presets whilst using the controller to allow you to MIDI map other presets within Live. In order to use this mode you need to provide a preset (1-32) which will be used for the controller. This preset number should be entered into preset.txt.

Note: Using this mode will cause the existing preset to be overwritten and replaced.

Note: This is not the default mode when you first install the software as we do not want to overwrite any presets that you may have before you get chance to re-organise/back them up.

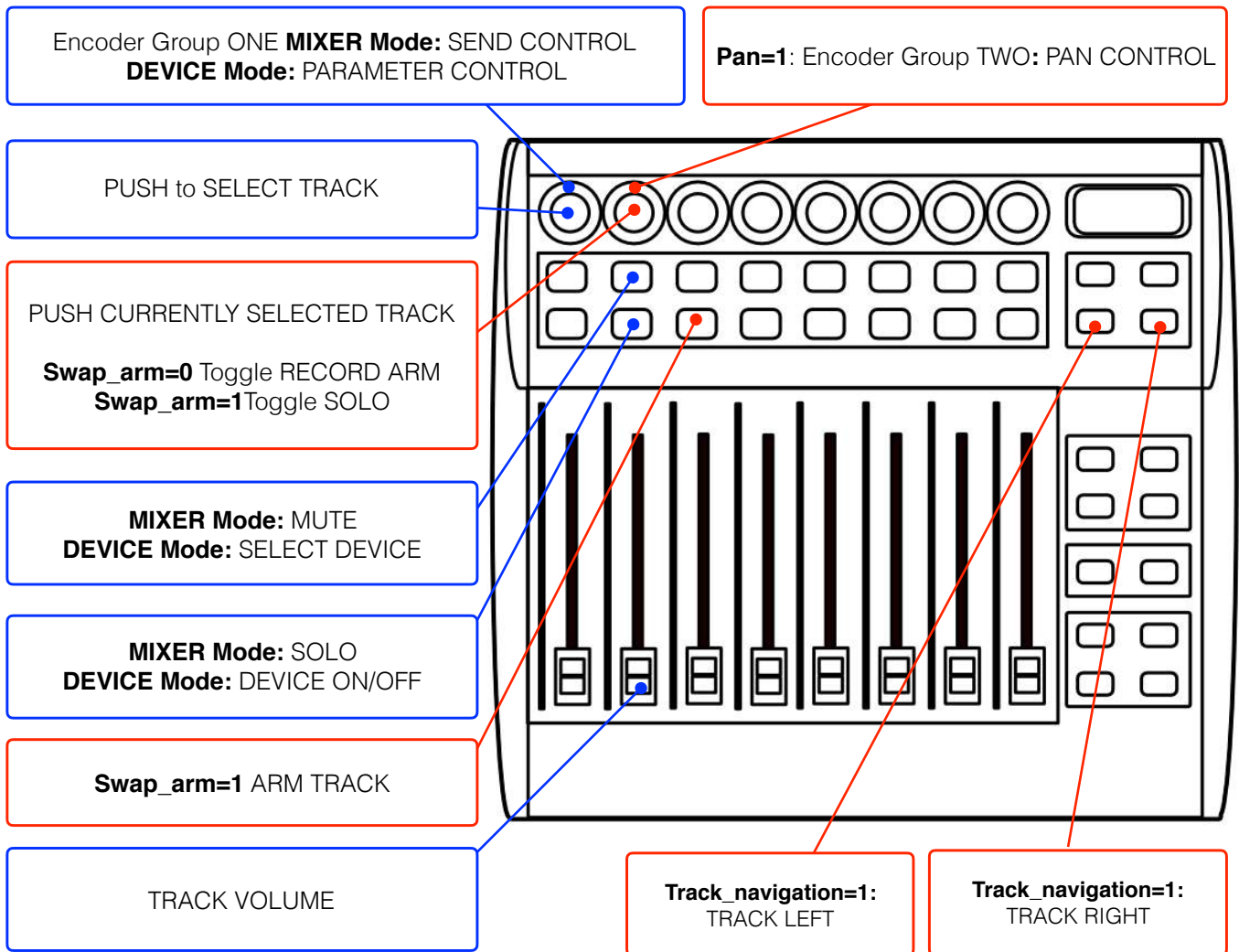
Upon startup the BCF will be placed into the designated preset.

Function Modes

BCF XL operates in two modes: Mixer mode and Device mode (switchable by one of the control buttons). The function of the buttons and encoders will change depending on which mode is being used. The controller will default to Mixer mode upon startup.

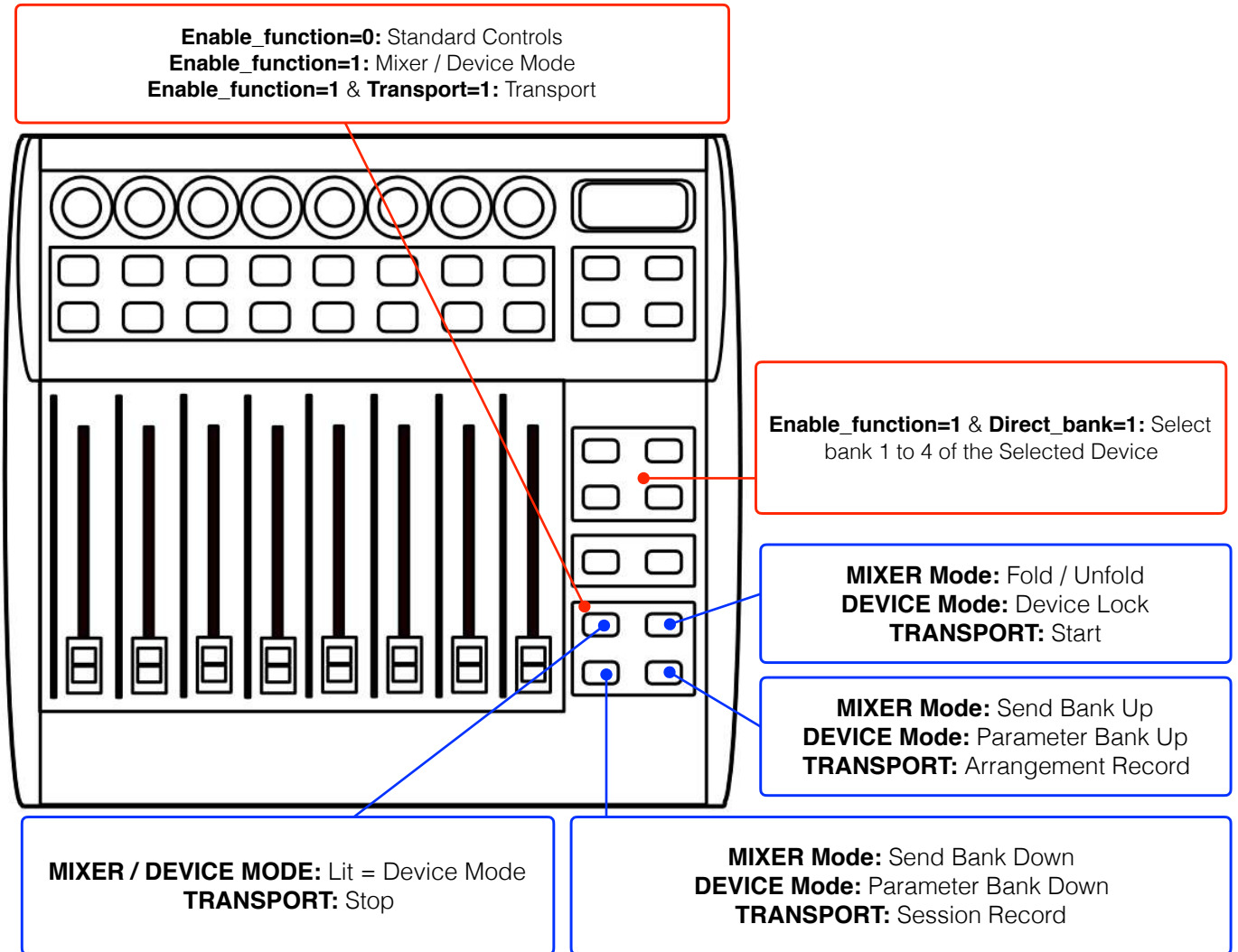
LED rings around the encoders will be illuminated when the encoder has a valid assignment in Live. The LED rings will be updated to reflect the current values in Live as you move around the set and as changes are made in Live.

BLUE = STANDARD OPERATION **RED** = CONFIGURATION OPTION



ENCODER GROUPS

If Track_navigation is set to 1 then the bottom two buttons operate track left and track right for the session. If you are using the BCF as a slave device for LaunchSync and session movement is controlled by another controller then you can set this to 0 to have access to all 4 encoder groups.



SELECTING THE MASTER TRACK IN DEVICE MODE

It is possible to select the Master track when in device mode by selecting the currently selected track, i.e. if track 3 is selected then using track select to select track 3 again will select the master track and allow devices to be controlled as with other tracks.

CONFIGURATION OPTIONS

The Isotonik Remote Script Installer contains a number of configuration options to tailor the operation of BCF XL. A Configuration utility is in development but for now this can be edited by hand.

Preset

The preset to be used for Live operation. If 0 is used then no presets are overwritten on the BCF but you will not be able to change presets during operation.

Enable_function

If set to 1 then the function section of the BCF is used for control operations and the bottom 4 buttons remain free for user mapping.

Track_navigation

If set to 1 then the bottom two buttons of the encoder groups are used for track left and right. If set to 0 then these remain in operation for encoder groups 3 and 4.

Swap_arm

If set to 1 then in mixer mode the bottom row of buttons operate track arm and the push encoders operate track solo, as opposed to the normal operation which is the opposite.

Direct_bank

Enable/disable direct bank mode.

14_bit

If set to 1 then the main 8 encoders on the BCF send 14-bit updates – this increases the resolution of each control for finer adjustments.

Pans

If set to 1 then then encoder group 2 is mapped to Pan control for each track.

Track_bank

If provided this changes how many tracks are moved left or right when banking in session view (defaults to 1).

Returns_mode

Determines how return tracks are handled:

0 – return tracks are not displayed

1 – return tracks are displayed, right justified, but normal tracks take priority and return tracks may need to be scrolled into view.

2 – return tracks are displayed, right justified, but return tracks take priority and will always displayed.

3 – tracks and return tracks are toggled via a control button with on or other being in view.

4 – tracks are display and return tracks are toggled as an overlay, right justified, via a control button.

Max_returns

The Max_returns config setting can be used to limit the number of return tracks that can be controlled (if you have a large number in the set but don't want all of them to appear on the controller). Setting this to a value of -1 will disable this feature.

Show_master

Toggles whether master track is displayed or not. The master track is always fixed at the right hand side of the controller.

Transport

Toggles whether transport controls are provided. This is only valid if Enable_function is 1.

Dynamic

This determines whether the BCF will enable/disable encoders and buttons to reflect current Live state with respect to the number of tracks currently in use and the number of parameters available for device control. It is recommended that you leave this set to 1 as it provides much clearer feedback. However, this does cause slight update delays (usually these won't have a negative impact) and can be turned off by setting this value to 0.

Log

Whether to write entries to the log file which is required when making a support request.

SUPPORT

For support issues please email sigabort@isotonikstudios.com or complete the support request form by visiting the Orders section of your account on the website and choosing the order that you placed to order the product.

In all cases please include the files produced when opening the Isotonik Remote Script Installer and pressing the “Support Request” button. Without these files we will be unable to support your request.