

## CONTROL SURFACE SCRIPT UPGRADE - CHANNEL STRIP



### FUNCTION

As an upgrade to supported Control Surface Scripts this upgrade adds an additional mode to the advanced Parameter Control option to give control of up to 8 Racks across the 8 Tracks within Ableton Live's RingFocus Box.

### INSTALLATION

Download the provided ZIP file and unzip the contents to your hard-drive.

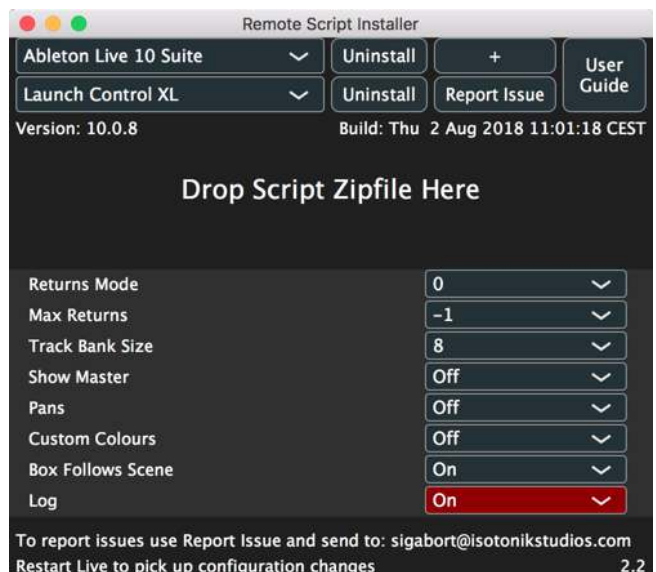
Open the provided Isotonik Remote Script Installer.pkg or .exe and follow the steps indicated by the installer, this will then place the Remote Script Installer within your applications.

Within the installer window select the version and location of your Live installation, click the + button to Add any custom location of Live. To install any script simply drag the zip file for the script onto the indicated area.

By selecting an installed script you can also change the configuration as detailed later in this document.

The Remote Script Installer also has a button that's linked to the location of the User Guides on your Hard-drive.

Finally we've provided a Report Issue option that will produce the files that we would need in order to support you should anything not be working as you'd expect. Please see the end of this manual for how to report any issues and request support



## CONFIGURATION

Each track that you wish to have control of in this mode needs to have an Effect Rack placed within it. The name of the rack needs to begin with “Isotonik” however you can add any other description afterwards e.g. “Isotonik DJ Rack”

The controller status will be updated immediately to reflect racks been added and removed to tracks. If you change the mapped parameters of a rack you will need to reload the rack by exiting and re-entering channel strip mode (i.e. double press of **SOLO** for the LaunchControl XXL Script).

## LAUNCHCONTROL XXL - BCR XL

With three rows of encoders the rack to the right shows how the banks are organised with Green as the First, Red as the Second and Orange as the third.

LED Feedback on the controller is also aligned in this manner.



### CONTROLS - LAUNCHCONTROL XL

To access the Channel Strip option select USER 6

To toggle between the 24 Parameter BlueHand Mode and Channel Strip Mode press the **SOLO** Button, it will light when in Channel Strip Mode.

When in Channel Strip Mode the 3 encoders will initially be mapped to the first 3 macro controls of the rack within each track named "Isotonik"

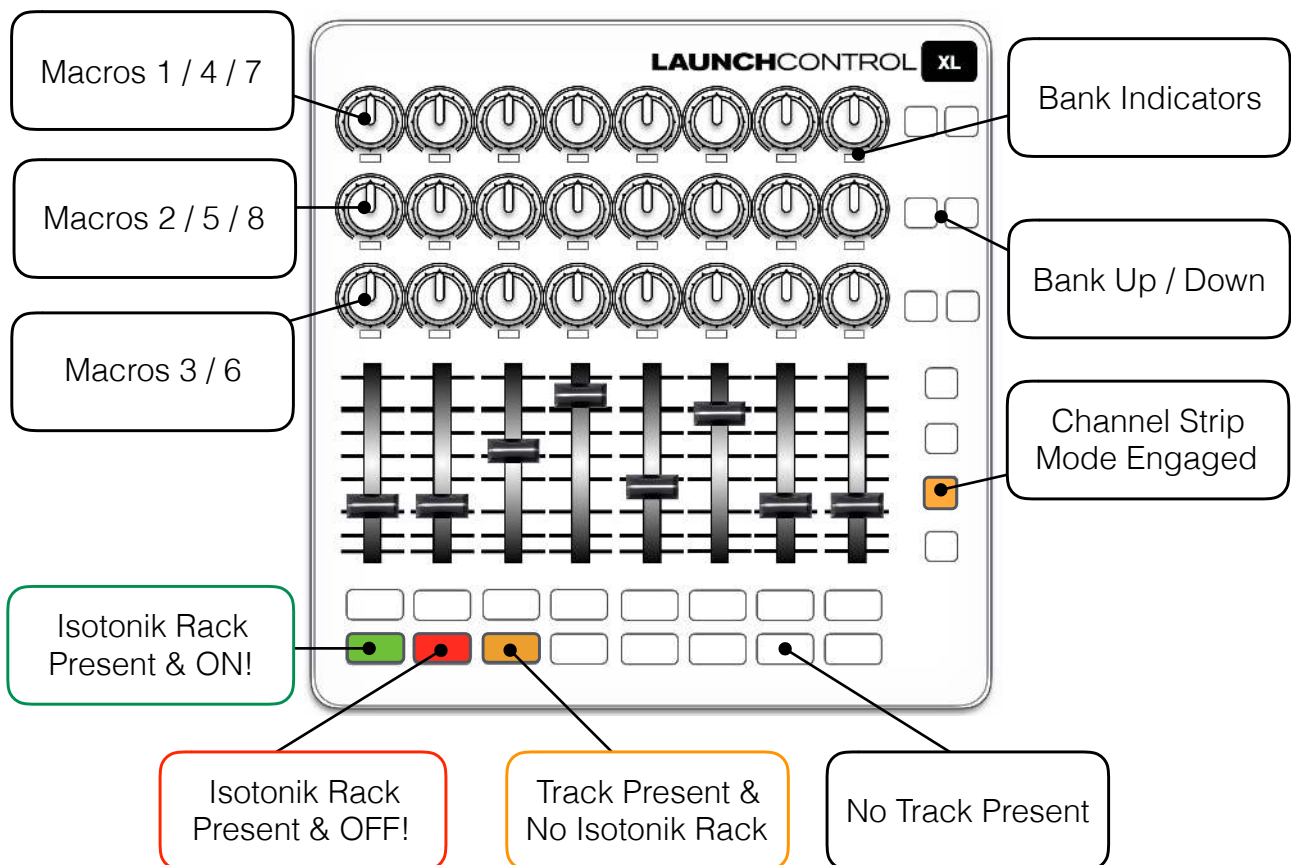
You can bank up and down through the rest of the macros using the **SEND SELECT** buttons. The currently selected bank will be indicated by the LED states of the lights beneath each encoder.

- GREEN - macros 1-3
- RED - macros 4-6
- AMBER - macros 7-8

You can move left and right in the set as normal with the **TRACK SELECT** buttons.

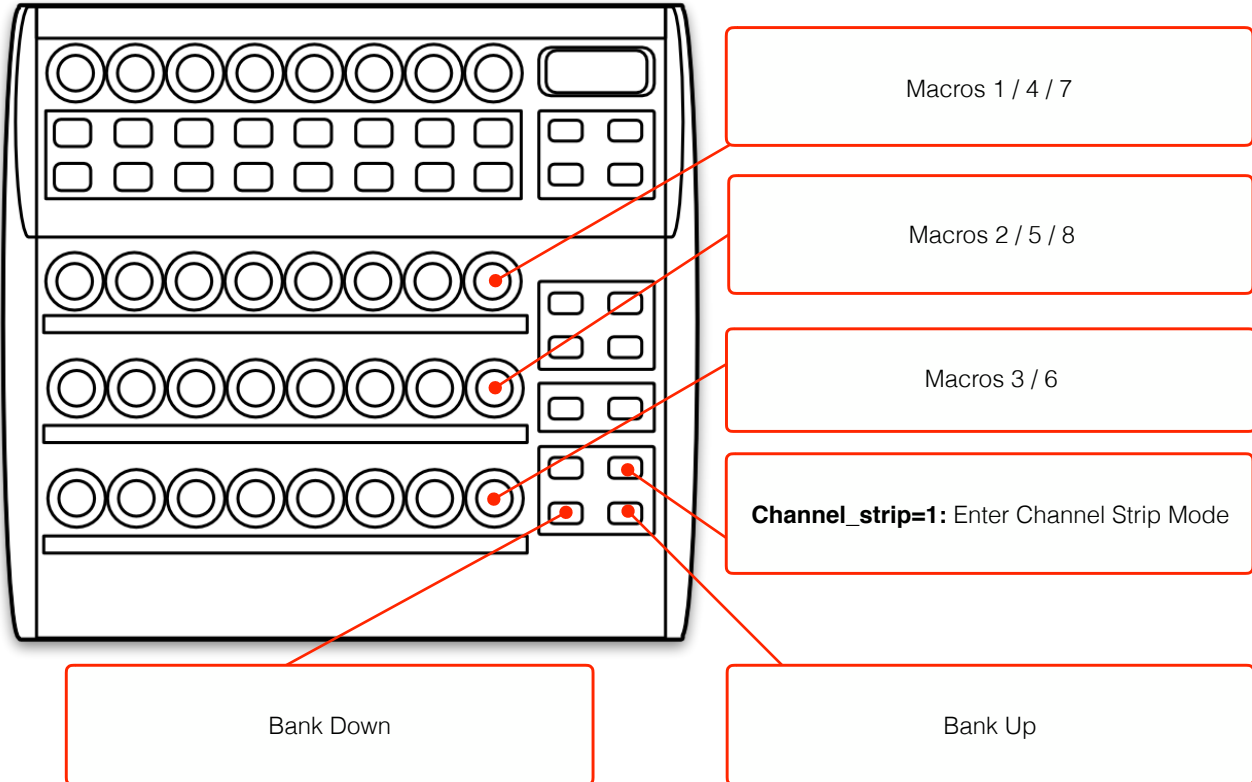
The **TRACK CONTROL** buttons can be used to enable/disable the rack on the tracks in view.

As with standard device mode it is possible to flick between standard Live operation and channel strip mode by using the **FACTORY** and **USER** template buttons, allowing you to easily switch between operation of the racks and sends.



**CONTROLS - BCR XL**

To enable Channel Strip functionality you should first change the option in the Isotonik Remote Script Installer that relates to the Channel Strip, it should read `Channel_strip=1` for the below controls to be active.

**SUPPORT**

For support issues please email [sigabort@isotonikstudios.com](mailto:sigabort@isotonikstudios.com) or complete the support request form by visiting the Orders section of your account on the website and choosing the order that you placed to order the product.

**In all cases please include the files produced when opening the Isotonik Remote Script Installer and pressing the “Support Request” button. Without these files we will be unable to support your request.**