

NOVATION LAUNCHCONTROL X - ABLETON LIVE CONTROL SURFACE SCRIPT**FUNCTION**

This script gives the user an enhanced experience via Configuration options and our User 6 mode which allows all 16 encoders to control parameters with the BlueHand AutoMapping feature.

COMPATIBILITY

The Launch_Control_X script provided is compatible with Ableton Live 9.6 and higher, please refer to the website before upgrading your Live Installation to ensure compatibility. We will continue to update our scripts for all versions of Live 9, all updates will be sent automatically to the email address used when purchasing.

PrEDITOR & LAUNCHSYNC

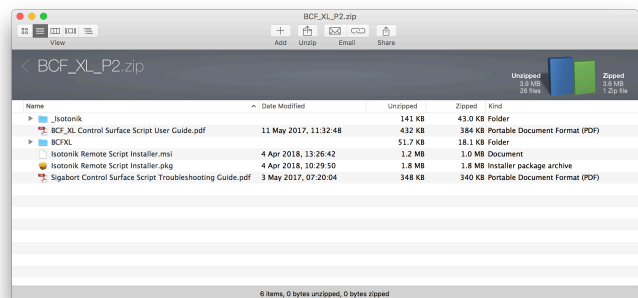
The Launch_Control_X script is firstly compatible with our PrEditor Mapping Utility which allows you to configure the exact order of parameters that are mapped when in focus of the Device Control Scene of the script. - [MORE DETAILS](#)

In addition the LaunchControl X script can be synced with other supported controllers by way of our LaunchSync Series of MaxforLive devices, a simple way of adding Fader and Encoder control to an Ableton Push or Novation LaunchControl - [MORE DETAILS](#)

INSTALLATION

Download the provided ZIP file and unzip the contents to your hard-drive.

Open the provided Isotonik Remote Script Installer.pkg or .exe and follow the steps indicated by the installer, this will then place the Remote Script Installer within your applications.

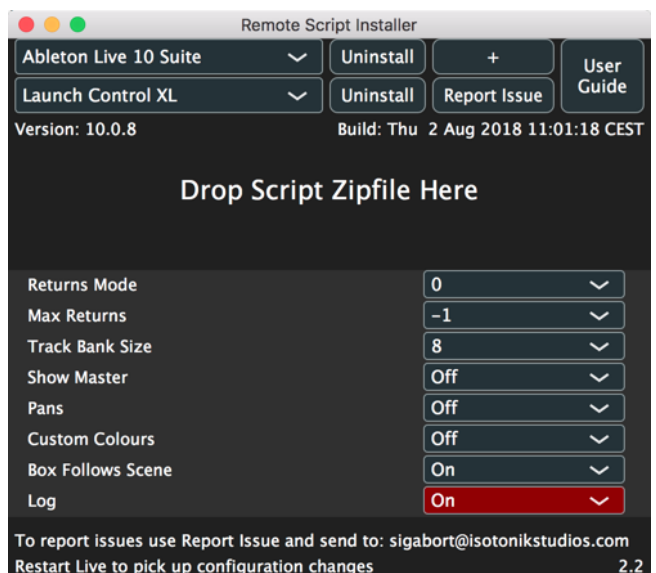


Within the installer window select the version and location of your Live installation, click the + button to Add any custom location of Live. To install any script simply drag the zip file for the script onto the indicated area.

By selecting an installed script you can also change the configuration as detailed later in this document.

The Remote Script Installer also has a button that's linked to the location of the User Guides on your Hard-drive.

Finally we've provided a Report Issue option that will produce the files that we would need in order to support you should anything not be working as you'd expect. Please see the end of this manual for how to report any issues and request support



CONFIGURATION OPTIONS

RETURNS MODE

The return tracks are right justified meaning that they will always appear on the right hand side of the controller. Two modes are provided which allow you to alter the behaviour of the display of the return tracks. This can be controlled by the **Returns_mode** setting.

Mode 0 – no return tracks are shown

Mode 1 – normal tracks have priority – return tracks will only be displayed if there are not enough normal tracks to fill the display – you can use the **BANK LEFT/RIGHT** buttons to scroll through normal tracks until the return tracks are displayed.

Mode 2 – return tracks have priority – return tracks will always be displayed and will occupy the right hand portion of the controller – you can use the **BANK LEFT/RIGHT** buttons to scroll through the normal tracks that can be controlled

MAX NUMBER OF RETURNS

The **Max_returns** config setting can be used to limit the number of return tracks that can be controller (if you have a large number in the set but don't want all of them to appear on the controller). Setting this to -1 will disable this filter

TRACK BANK

You can configure how many tracks are moved left and right with the **BANK LEFT / RIGHT** buttons by changing the **Track_bank** value.

SHOW MASTER

With this set to 1 the 8th track on the controller will always be dedicated to control the Master Track in Live regardless of the location of the Ring Focus Box

AUTO SCAN MULTI

The script is fully PrEditor compatible so this option will define how Multi-Map VST's behave when selected for editing are automatically scanned for parameter layout or whether the user does it via the PrEditor UI.

LOG

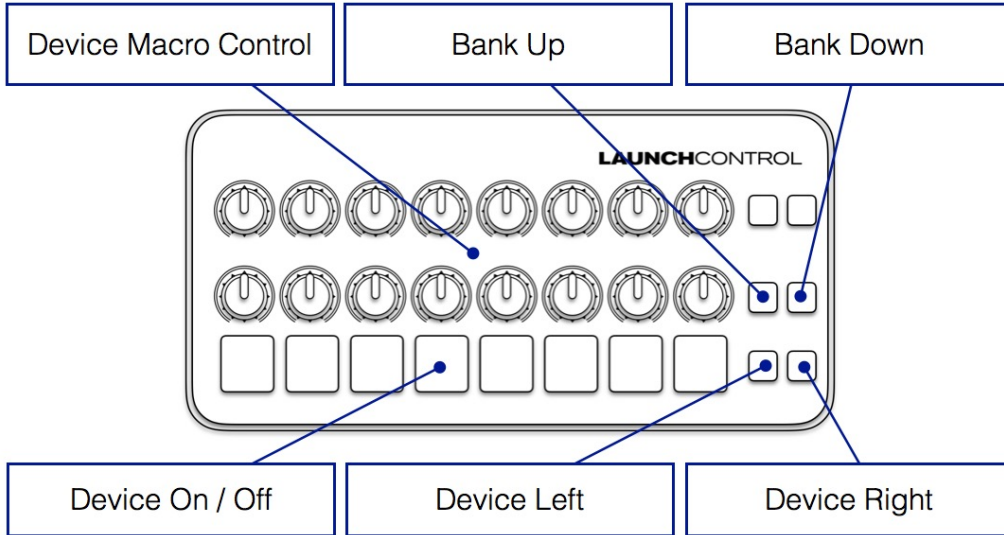
This is used by our developers to debug any issues, please include it within your email when requesting any support.

USER MODE SIX - DEVICE CONTROL

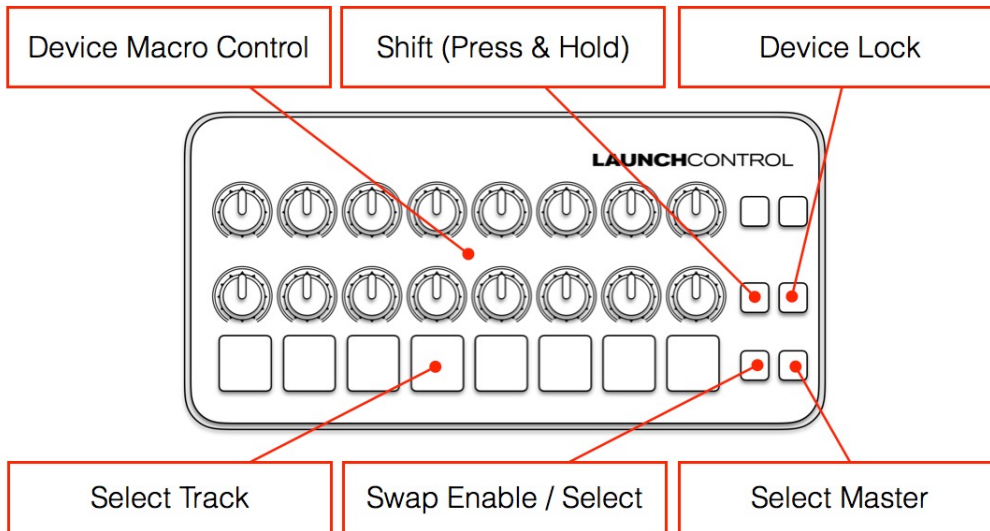
In this User Mode you get to control 16 parameters of the currently focused device with the 16 encoders.

Working with 16 at a time can often mean that the banks created by Ableton when working in groups of 8 parameters could do with some refining. In this case the PrEditor Mapping Utility will allow you to define the banks and their parameter content.

STANDARD MODE



SHIFT MODE - PRESS AND HOLD THE UP BUTTON TO SWITCH



SUPPORT

SUPPORT

For support issues please email sigabort@isotonikstudios.com or complete the support request form by visiting the Orders section of your account on the website and choosing the order that you placed to order the product.

In all cases please include the files produced when opening the Isotonik Remote Script Installer and pressing the “Support Request” button.