

SIGABORT LAUNCHCONTROL XXL CONTROL SURFACE SCRIPT

FUNCTION

The Launch Control XXL script brings extended device control and returns functionality to your Launch Control XL, along with a couple of other enhancements.

Some of the enhancement are options that can be enabled/disabled via changes to the included config.txt file.



INSTALLATION

INSTALLATION

Download the provided ZIP file and unzip the contents to your hard-drive.

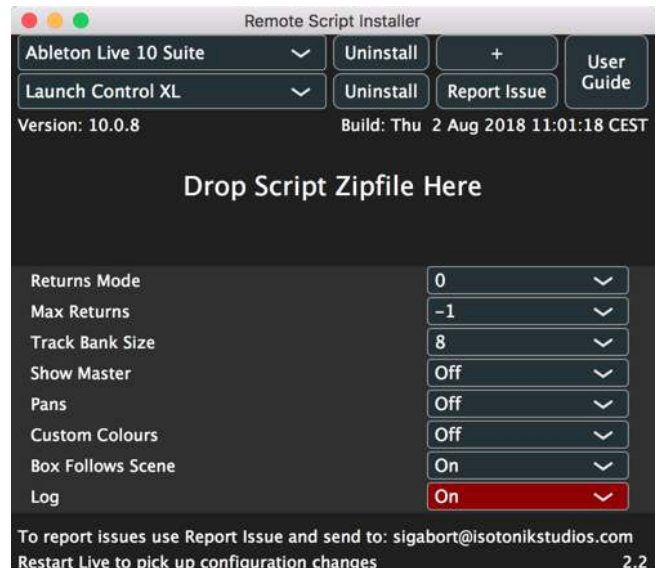
Open the provided Isotonik Remote Script Installer.pkg or .exe and follow the steps indicated by the installer, this will then place the Remote Script Installer within your applications.

Within the installer window select the version and location of your Live installation, click the + button to Add any custom location of Live. To install any script simply drag the zip file for the script onto the indicated area.

By selecting an installed script you can also change the configuration as detailed later in this document.

The Remote Script Installer also has a button that's linked to the location of the User Guides on your Hard-drive.

Finally we've provided a Report Issue option that will produce the files that we would need in order to support you should anything not be working as you'd expect. Please see the end of this manual for how to report any issues and request support



EXTENDED DEVICE CONTROL

Extended device mode is entered by selecting the USER 6 preset.

When in device mode the 24 encoders will be mapped to the first 24 parameters of the selected (Blue-Handed) device. If the **SEND SELECT** buttons are illuminated then you can use these buttons to bank up/down through groups of 24 parameters. Each bank is coloured differently on the controller so that you can keep track of where you are.

The **TRACK FOCUS** buttons can be used to select which device is being controlled on the currently selected track (for the first 8).

The **TRACK CONTROL** buttons can be used to either select the current device or enable/disable each device on the currently selected track (for the first 8). By default, the buttons will enable/disable the devices – if you turn on the **RECORD ARM** button, the buttons will select the current device.

The **TRACK SELECT** buttons can also be used to scroll through the devices on a track and allow access to devices if there are more than 8 on a given track.

VISUAL FEEDBACK

The **TRACK CONTROL** buttons show the current state of the device on the currently selected track:

- **YELLOW:** Currently selected device – enabled
- **AMBER:** Currently selected device – disabled
- **GREEN:** Enabled devices
- **RED:** Disabled devices

DEVICE LOCK

Pressing the **DEVICE** button whilst in this mode will lock the surface to the currently selected device.

SESSION HIGHLIGHT

Session highlight is provided (the 'Red Box') to show you where the controller is positioned in your set.

SELECTING THE MASTER TRACK IN DEVICE MODE

It is possible to select the Master track when in **DEVICE MODE** by selecting the currently selected track, i.e. if track 3 is selected then using track select to select track 3 again will select the master track and allow devices to be controlled as with other tracks.

You can also select the master track if Show_master is set to 1 within the script configurations available via the Isotonik Rem one Script Installer application and the master track is visible when entering **DEVICE MODE**

CONFIGURATION OPTIONS

RETURNS CONTROL

The return tracks are right justified meaning that they will always appear on the right hand side of the controller. Two modes are provided which allow you to alter the behaviour of the display of the return tracks. This can be controlled by the Returns_mode setting via the Isotonik Remote Script Installer application.

Return tracks are coloured red on the controller to distinguish them from standard tracks (amber).

- Mode 0 – no return tracks are shown
- Mode 1 – normal tracks have priority – return tracks will only be displayed if there are not enough normal tracks to fill the display – you can use the **TRACK_SELECT** buttons to scroll through normal tracks until the return tracks are displayed.
- Mode 2 – return tracks have priority – return tracks will always be displayed and will occupy the right hand portion of the controller – you can use the **TRACK_SELECT** buttons to scroll through the normal tracks that can be controlled.
- Mode 3 - return tracks are toggled into view, by default normal tracks are shown and controlled. The return tracks can be viewed by resulting the current mode button (MURE, SOLO, RECORD ARM) and will occupy the controller from the right hand side of the controller.
- Mode 4 - return tracks are toggled into view as an overlay, similar to Mode 3, but rather than occupying the whole controller when toggled active the view will be as it is in Mode 2.

MAX NUMBER OF RETURNS

For Modes 1, 2 and 4 the Max_returns setting can be used to limit the number of return tracks that can be controlled (if you have a large number of return tracks in the set but don't want all of them to appear on the controller). Setting this to a value of -1 will disable this feature.

MAIN ENCODER CONFIGURATION

In normal operation the top 2 rows of encoders are sends and the 3rd row are pans. In a performance situation you may wish to have 3 send controls rather than the pan control so you can turn off the pans by setting the Pans_enabled entry to 0.

TRACK NAVIGATION

You can configure how many tracks are moved left and right with the **TRACK_SELECT** buttons by changing the Track_bank value in config.txt.

MASTER CONTROLLER

If the Show_master setting is 1 then the master track will be shown at the right hand side of the controller when applicable. This will be shown with a yellow encoder light, this then will give you Volume and Pan control.



TRACK FOLD

When in **Factory ONE** mode you can fold/unfold the currently selected track (if applicable) by reselecting that track using track select. This will toggle the state of the group track.

CONFIG REFERENCE

Parameter	Default	Description
Pans_enabled	1	Whether the 3 rd row of encoders is used to control pans (1) or sends (0)
Returns_mode	1	How return tracks are displayed
Max_returns	-1	Max number of return tracks to be controlled
Track_bank	1	How many tracks to move left/right at a time
Show_master	0	Whether the master track can be controlled

SUPPORT

For support issues please email sigabort@isotonikstudios.com or complete the support request form by visiting the Orders section of your account on the website and choosing the order that you placed to order the product.

In all cases please include the files produced when opening the Isotonik Remote Script Installer and pressing the “Support Request” button. Without these files we will be unable to support your request.