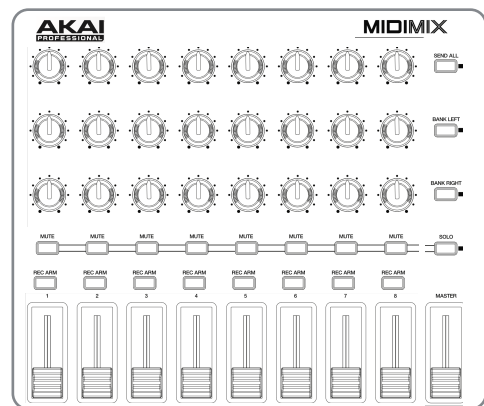


## SIGABORT MIDIMIX XL CONTROL SURFACE SCRIPT

### FUNCTION

The MIDI Mix XL script brings device control functionality to your MIDI mix, along with a couple of other enhancements.

Some of the enhancement are options that can be enabled/disabled via changes to the included config.txt file.



### INSTALLATION

Download the provided ZIP file and unzip the contents to your hard-drive.

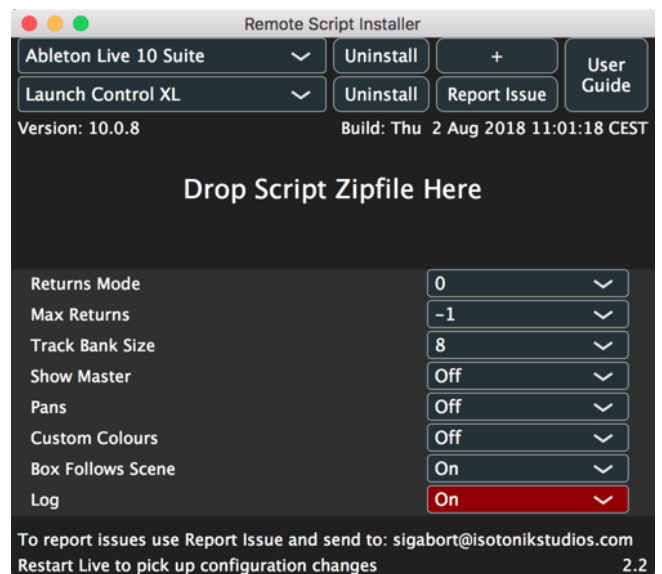
Open the provided Isotonik Remote Script Installer.pkg or .exe and follow the steps indicated by the installer, this will then place the Remote Script Installer within your applications.

Within the installer window select **User Library option**, click the + button to Add any custom location of Live. To install any script simply drag the zip file for the script onto the indicated

By selecting an installed script you can also change the configuration as detailed later in this document.

The Remote Script Installer also has a button that's linked to the location of the User Guides on your Hard-drive.

Finally we've provided a Report Issue option that will produce the files that we would need in order to support you should anything not be working as you'd expect. Please see the end of this manual for how to report any issues and request support



## **DEVICE CONTROL**

Device mode is entered by a quick press on the **SOLO** button (rather than the longer press used to change the operation of the **MUTE** buttons into solo).

When in device mode the 24 encoders will be mapped to the first 24 parameters of the selected (Blue-Handed) device. If the **BANK LEFT/RIGHT** buttons are illuminated then you can use these buttons to bank up/down through groups of 24 parameters.

The **MUTE** buttons can be used to select which device is being controlled on the currently selected track (for the first 8).

The **REC ARM** buttons can be used to set the current track in Live or enable/disable the devices on the track (for the first 8). The modes are toggled by a long press on the **SOLO** button. The default behaviour can be changed by the `Swap_select` setting in `config.txt`.

## **SELECTING THE MASTER TRACK IN DEVICE MODE**

It is possible to select the Master track when in **DEVICE MODE** by selecting the currently selected track, i.e. if track 3 is selected then using track select to select track 3 again will select the master track and allow devices to be controlled as with other tracks.

## **SESSION HIGHLIGHT**

Session highlight is provided (the 'Red Box') to show you where the controller is positioned in your set.

## **SEND BANKING**

The sends being controlled can be banked by holding down **SOLO** momentarily and then using the **BANK LEFT/RIGHT** buttons to bank through the available return tracks.

## **TRACK FOLD**

You can fold/unfold the currently selected track (if applicable) when in **MIXER** mode by reselecting that track using track select. This will toggle the state of the group track.

## CONFIGURATION OPTIONS

### RETURNS CONTROL

The return tracks are right justified meaning that they will always appear on the right hand side of the controller. Two modes are provided which allow you to alter the behaviour of the display of the return tracks. This can be controlled by the **Returns\_mode** setting.

**Mode 0** – no return tracks are shown

**Mode 1** – normal tracks have priority – return tracks will only be displayed if there are not enough normal tracks to fill the display – you can use the **BANK LEFT/RIGHT** buttons to scroll through normal tracks until the return tracks are displayed.

**Mode 2** – return tracks have priority – return tracks will always be displayed and will occupy the right hand portion of the controller – you can use the **BANK LEFT/RIGHT** buttons to scroll through the normal tracks that can be controlled

### MAX NUMBER OF RETURNS

The Max\_returns config setting can be used to limit the number of return tracks that can be controller (if you have a large number in the set but don't want all of them to appear on the controller). Setting this to -1 will disable this filter

### MAIN ENCODER CONFIGURATION

In normal operation the top 2 rows of encoders are sends and the 3<sup>rd</sup> row are pans. In a performance situation you may wish to have 3 send controls rather than the pan control so you can turn off the pans by setting the Pans\_enabled entry to 0.

### TRACK SELECTION

The current track can be selected by holding down SOLO and a REC ARM button. You can change the default behaviour of the REC ARM buttons in mixer and device mode by using the Swap\_mixer\_select and Swap\_device\_enable options.

### TRACK NAVIGATION

You can configure how many tracks are moved left and right with the **BANK LEFT / RIGHT** buttons by changing the **Track\_bank** value.

### CONFIG REFERENCE

Parameter	Default	Description
Pans_enabled	1	Whether the 3 <sup>rd</sup> row of encoders is used to control pans (1) or sends (0)
Returns_mode	1	How return tracks are displayed
Max_returns	-1	Max number of return tracks to be controlled
Swap_device_enable	0	Whether REC ARM buttons control track select (1) or device enable/disable (0) by default in device mode
Swap_mixer_select	0	Whether REC ARM buttons control track select (1) or rec arm (0) by default in mixer mode
Track_bank	1	How many tracks to move left/right at a time

## **SUPPORT**

For support issues please email [sigabort@isotonikstudios.com](mailto:sigabort@isotonikstudios.com) or complete the support request form by visiting the Orders section of your account on the website and choosing the order that you placed to order the product.

**In all cases please include the files produced when opening the Isotonik Remote Script Installer and pressing the “Support Request” button. Without these files we will be unable to support your request.**