

NANOKONTROL STUDIO XL - ABLETON LIVE CONTROL SURFACE SCRIPT

FUNCTION

This script gives the user 5 scenes of controls to utilise within Ableton Live, the first three have been programmed for deep integration with Ableton Live functions leaving two further scenes for User MIDI mapping.

COMPATIBILITY

The NKS_XL script provided is compatible with Ableton Live 9.6 and higher, please refer to the website before upgrading your Live Installation to ensure compatibility. We will continue to update our scripts for all versions of Live 9, all updates will be sent automatically to the email address used when purchasing.

PrEDITOR & LAUNCHSYNC

The NKS_XL script is firstly compatible with our PrEditor Mapping Utility which allows you to configure the exact order of parameters that are mapped when in focus of the Device Control Scene of the script. - [MORE DETAILS](#)

In addition the NanoKontrol Studio can be synced with other supported controllers by way of our LaunchSync Series of MaxforLive devices, a simple way of adding Fader and Encoder control to an Ableton Push or Novation LaunchControl - [MORE DETAILS](#)

INSTALLATION

Download the provided ZIP file and unzip the contents to your hard-drive.

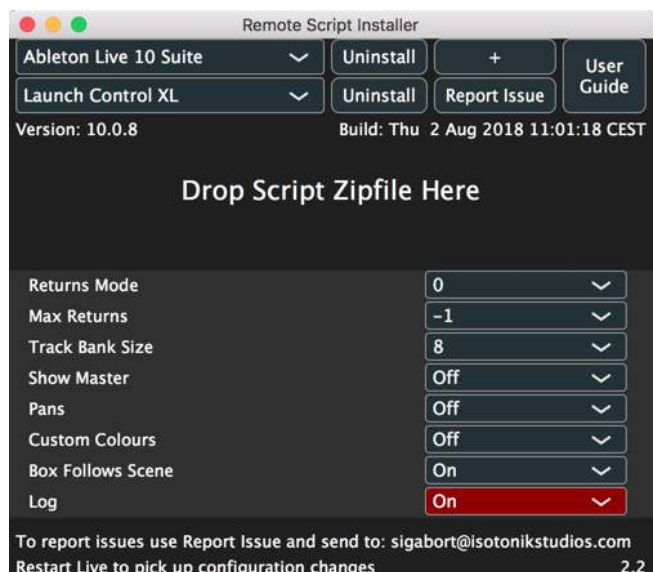
Open the provided Isotonik Remote Script Installer.pkg or .exe and follow the steps indicated by the installer, this will then place the Remote Script Installer within your applications.

Within the installer window select the version and location of your Live installation, click the + button to Add any custom location of Live. To install any script simply drag the zip file for the script onto the indicated area.

By selecting an installed script you can also change the configuration as detailed later in this document.

The Remote Script Installer also has a button that's linked to the location of the User Guides on your Hard-drive.

Finally we've provided a Report Issue option that will produce the files that we would need in order to support you should anything not be working as you'd expect. Please see the end of this manual for how to report any issues and request support



NanoKontrol Studio Configuration

To work correctly the NanoKontrol Studio needs to have a template loaded into it. You'll find the ZIP file contains a nks_xl_nktrl_st_set file.

- Install KorgKontrol Editor - [CLICK HERE](#)
- Connect the NanoKontrol Studio via USB if you have not done so already
- Select the NanoKontrol Studio in the Editor
- Locate the nks_xl_nktrl_st_set file on your Hard-Drive from within the Editors browser
- Use the Communication menu at the top of the screen and choose the Write Scene Set option

Your controller will now be configured to communicate on MIDI Channel 1 for the first three scenes.



CONFIGURATION OPTIONS

Within the Isotonik Remote Script Installer are a number of configuration options, you can edit these with the details below to give different behaviours to your controller. Remember that changes will not take place until you have saved the file and restarted Live.

RETURNS MODE

The return tracks are right justified meaning that they will always appear on the right hand side of the controller. Two modes are provided which allow you to alter the behaviour of the display of the return tracks. This can be controlled by the **Returns_mode** setting.

Mode 0 – no return tracks are shown

Mode 1 – normal tracks have priority – return tracks will only be displayed if there are not enough normal tracks to fill the display – you can use the **BANK LEFT/RIGHT** buttons to scroll through normal tracks until the return tracks are displayed.

Mode 2 – return tracks have priority – return tracks will always be displayed and will occupy the right hand portion of the controller – you can use the **BANK LEFT/RIGHT** buttons to scroll through the normal tracks that can be controlled

MAX NUMBER OF RETURNS

The **Max_returns** config setting can be used to limit the number of return tracks that can be controller (if you have a large number in the set but don't want all of them to appear on the controller). Setting this to -1 will disable this filter

TRACK NAVIGATION

You can configure how many tracks are moved left and right with the **BANK LEFT / RIGHT** buttons by changing the **Track_bank** value.

SHOW MASTER

With this set to 1 the 8th track on the controller will always be dedicated to control the Master Track in Live regardless of the location of the Ring Focus Box

AUTO SCAN MULTI

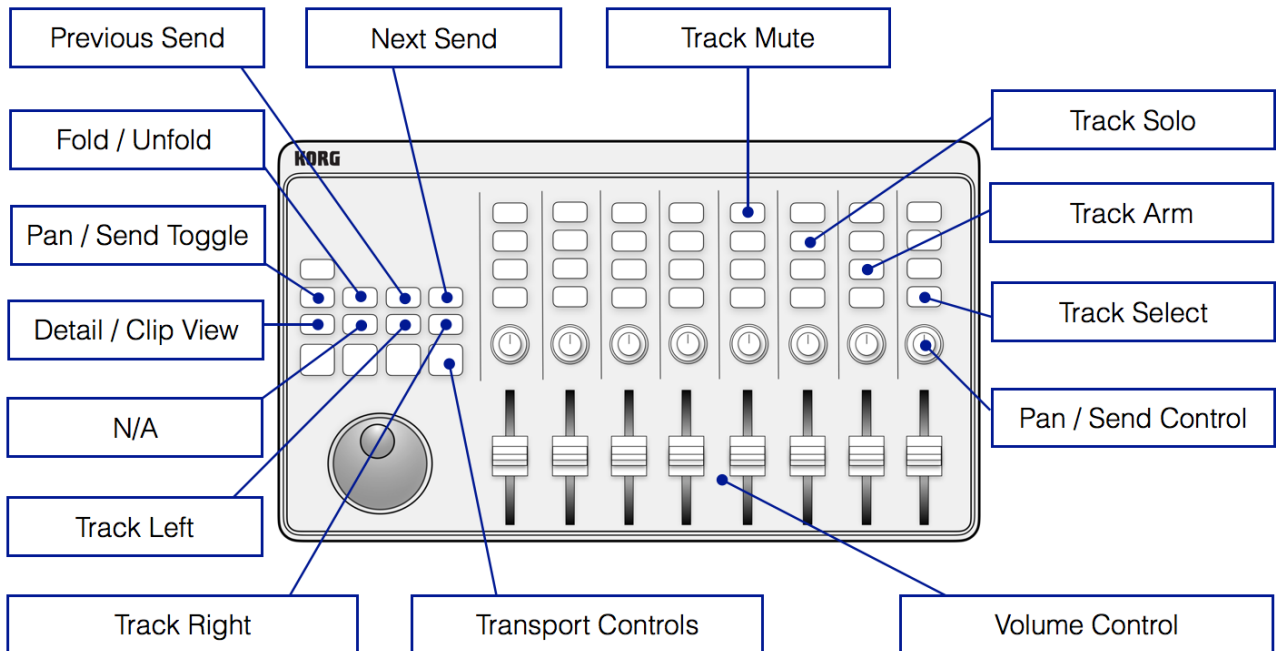
The script is fully PrEditor compatible so this option will define how Multi-Map VST's behave when selected for editing are automatically scanned for parameter layout or whether the user does it via the PrEditor UI -

LOG

This is used by our developers to debug any issues, you'll receive instructions when reporting any issues to our support team.

SCENE ONE - MIXER CONTROL

This scene is dedicated to Mixer Control, please refer to the diagram below for the functionality of each of the controls. Within the Session View of Ableton Live you will see a Ring Focus Box indicating which 8 tracks are being controlled.



FOLD / UNFOLD

When a particular track is selected the Fold / Unfold Button will light if a Group Track has been selected. If flashing the Group Track has been folded.

TRACK SELECT

The currently selected track button will flash to indicate it's selection.

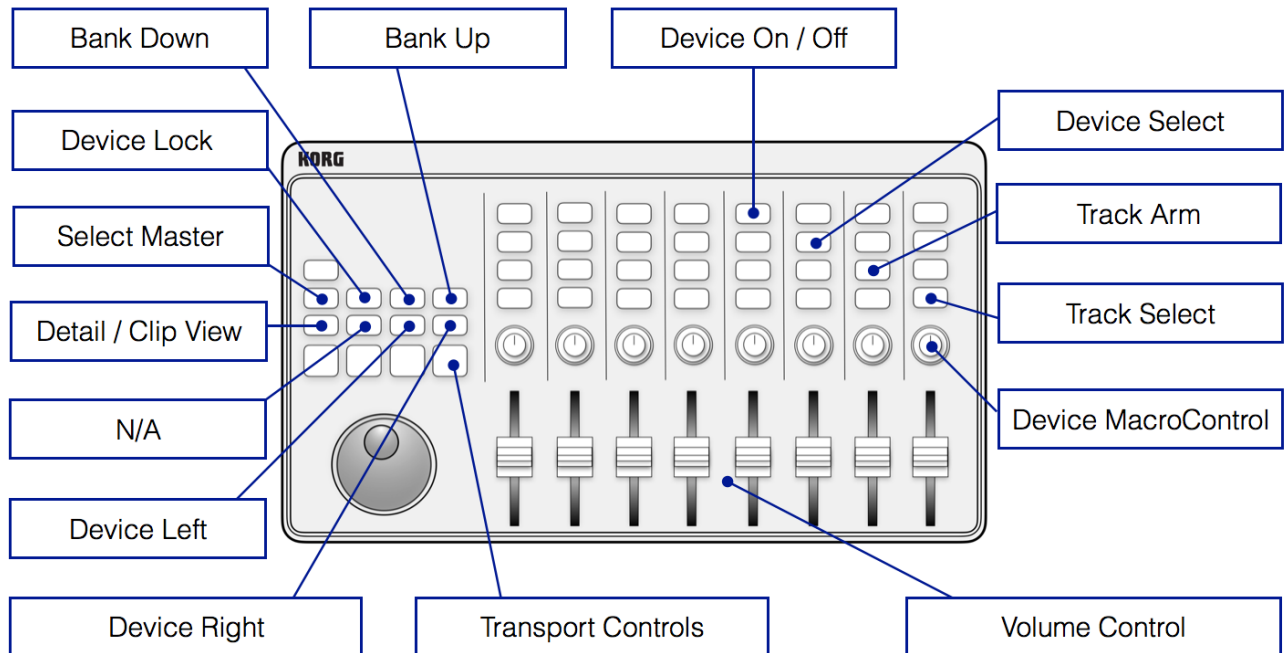
TRACK MUTE

The Track Mute Buttons will flash to indicate which tracks are muted.

SCENE TWO - DEVICE CONTROL

Whilst retaining much of the Mixer Control functionality this scene switches some controls to give Device Control over the currently BlueHanded device in focus.

The automatic parameter mappings defined by Ableton can be edited using our PrEditor Mapping Utility - [MORE DETAILS](#)



DEVICE ON / OFF

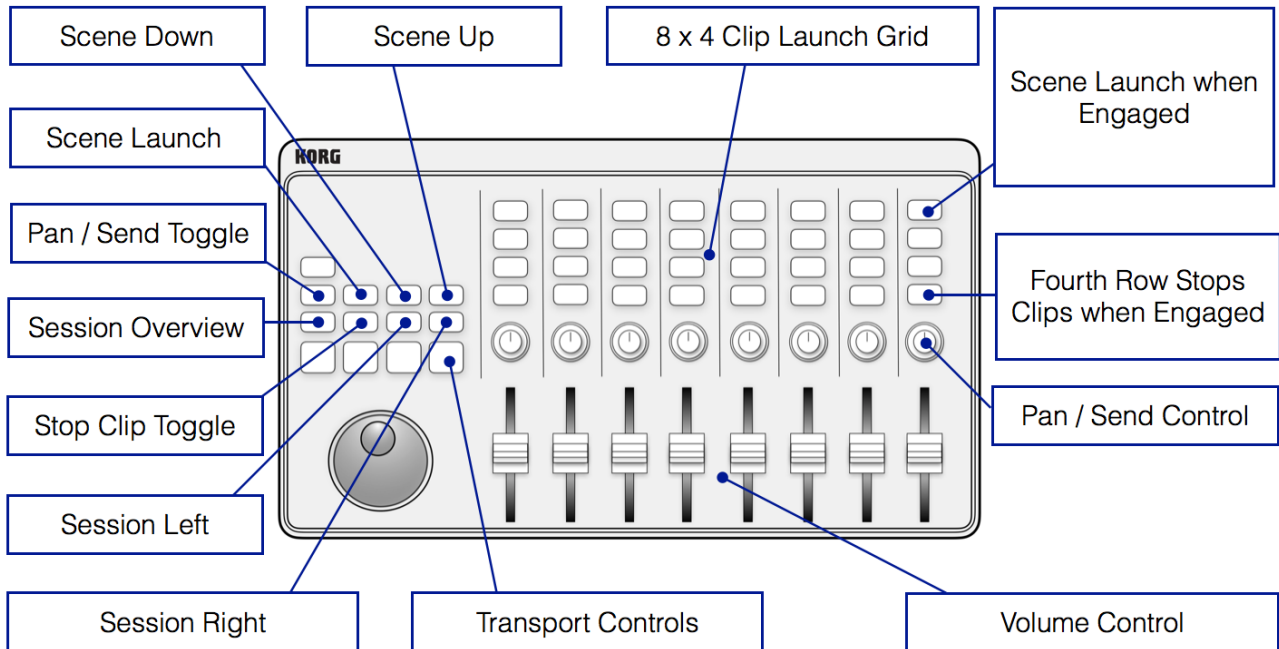
The Device On / Off buttons will only light when a device is present on the selected track

DEVICE SELECT

The Device Select buttons will only light when a device is present on the selected track. The currently selected device will be indicated by a flashing button.

SCENE THREE - SESSION CONTROL

Switch into Scene Three and the 8 x 4 set of buttons at the top of the controller are given over to clip launching focusing on the 8 x 4 grid of clips highlighted on the screen in Session Mode by the Ring Focus Box.



CLIP LAUNCH GRID

The currently selected clip will be indicated by a fast flashing button, any playing clips will show by flashing slowly.

CLIP STOP

When the Forward button is pressed the fourth row of Clip Launch buttons become Clip Stop buttons, where there are clips playing in a track they will be indicated by flashing buttons. These will become solidly lit when a stop action has been sent and unlit when no clips are playing.

SESSION OVERVIEW

In this mode each button of the Clip Launch Grid represents an 8 x 4 block of clip slots in Live. The current position of the Ring Focus Box is indicated with a fast flashing button, if there are any clips playing within an 8 x 4 block then a slow flashing button will indicate this.

SUPPORT

For support issues please email sigabort@isotonikstudios.com or complete the support request form by visiting the Orders section of your account on the website and choosing the order that you placed to order the product.

In all cases please include the files produced when opening the Isotonik Remote Script Installer and pressing the “Support Request” button. Without these files we will be unable to support your request.