

Visual Browser



I often find myself knowing what I want to load into my project but I can't remember it's name, and I end up loading plugin after plugin...
So I created the VisualBrowser

The Visual Browser is a MaxForLive device that makes it easy to find and load Devices, plugins, Track presets, or basically anything that is accessible from Ableton Live's browser.

No more searching through countless plugins to find the one you want.

DISCLAIMER:

- This is a MaxForLive device so you're gonna need either Live suite, or Live standard with MaxForLive.
- Compatible with Ableton Live 10, Live 11. and Live 12

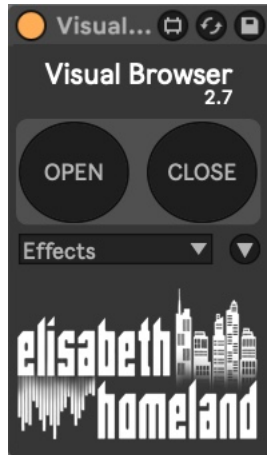
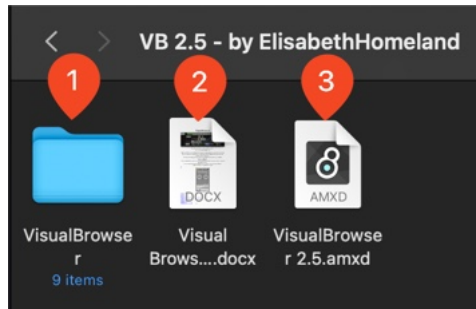


TABLE OF CONTENTS

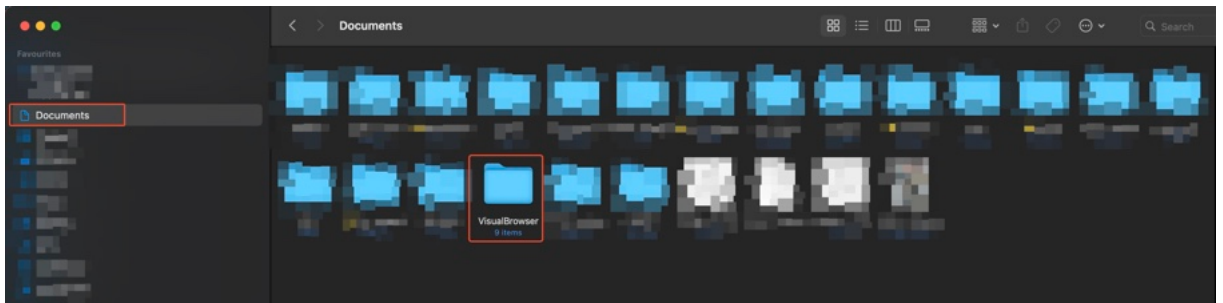
| | |
|--|-----------|
| INSTALLATION : | 3 |
| USAGE: | 5 |
| Main Controls | 5 |
| Usecases | 5 |
| The Main Window: | 7 |
| Navigation | 7 |
| The Dice | 7 |
| Settings Panel | 8 |
| Browser Settings | 8 |
| Layout Presets | 14 |
| Misc Settings | 15 |
| USING THE EDITOR: | 17 |
| Adding SubCategories: | 18 |
| Adding Cards: | 19 |
| Adding Pictures to Cards: | 21 |
| CONTACT: | 22 |

INSTALLATION :

When you unzip the download you'll find three files in it:



1. Put the „**VisualBrowser**” folder into the Documents directory like this :
/Documents/VisualBrowser

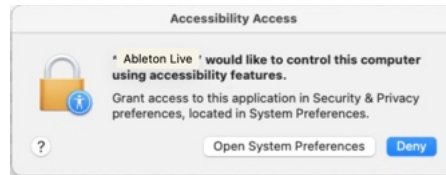


2. This documentation : Read it! :)
3. The actual Device:
You can **put the VisualBrowser.amxd file into your Ableton Live user library**, basically anywhere.

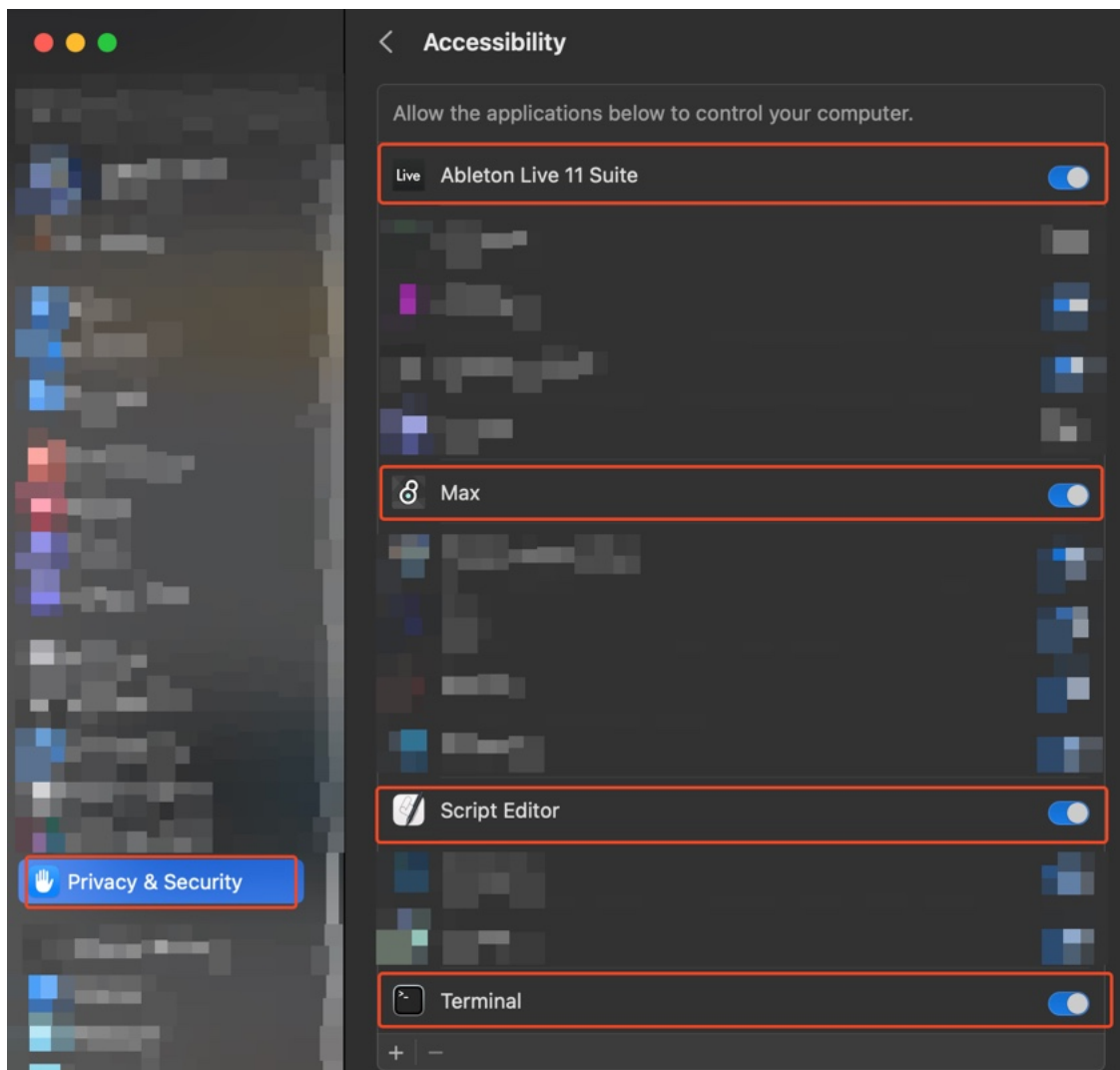
When you install Live for the first time, the User Library is created at this location:
WINDOWS: \USERS\[USERNAME]\DOCUMENTS\ABLETON\USER LIBRARY
MAC: MACINTOSH HD/USERS/[USERNAME]/MUSIC/ABLETON/USER LIBRARY

Please note that Live has to analyse your user library after you put your devices in there... It could take a while. For the time being, you can just drag and drop these devices on your track from your user library. until Live analyses your folders.

If you're on mac: When you first load a device into your project you should get a prompt like this :



If you don't get this prompt make sure that you enable all these apps in System Preferences / Security&Privacy/ Accessibility:



On Windows you're good to go without doing anything! 😊

USAGE:

MAIN CONTROLS



1. Put the device into your master track (or basically anywhere in your project)
2. Key or MIDI map the „OPEN” and the „CLOSE” button.

USECASES

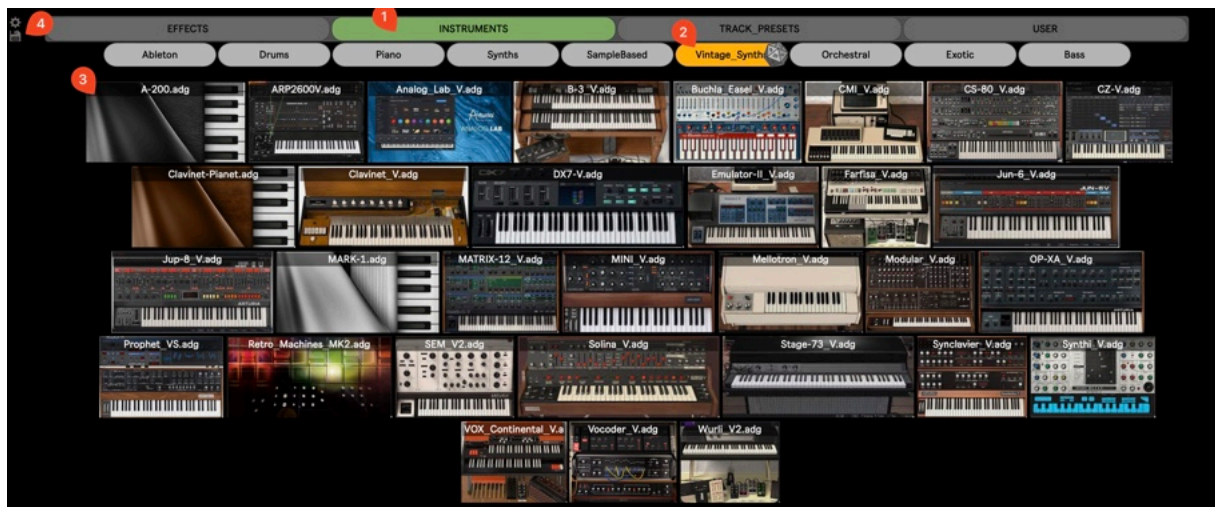
Visual Browser is a MaxForLive device that lets you load your favorite plugins/devices, instruments, track presets, samples into your project with a well organized visual layout.

You can fully customize it, and use it as you wish. For example:

| | |
|---|--|
| Open it with a shortcut in fullscreen mode, and let it dissappear when you finished | |
| Replace Live's browser with it. | |
| Use it on a TouchScreen or external display, and keep it open all the time. | |

THE MAIN WINDOW:

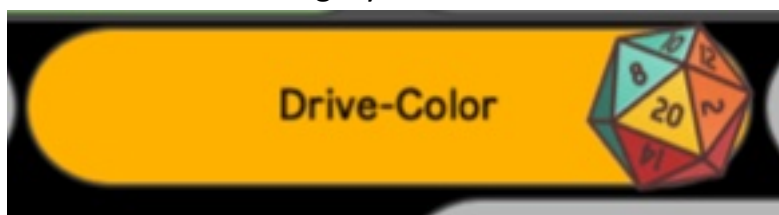
NAVIGATION



1. Select one of your main Categories (Effects, Instruments, TrackPresets, User)
2. Select one of the SubCategories.
3. Press on a card to load it into the selected track.
4. Open the Settings, or the LayoutPreset panels.

THE DICE

If you press the „Dice” button, you can load a random card into the project from the selected SubCategory:



(Combine the Dice with the [Random Place](#) option for a total surprise :))

SETTINGS PANEL

BROWSER SETTINGS

Browser Settings 200 %

1. Settings icon, 2. Zoom slider, 3. Window control buttons

4. Choose between Windowed and Full Screen mode
FullScreen | Windowed

5. Window Transparency: 0.00 %

6. Set where the VB Window's top should start: Top Placement: 20

7. Adjust the margin thickness - Higher values are ideal for touchscreen displays. Margin: 28.00

8. Set the Cards alignment method: **Center_Align**

9. Change the Categories and Cards size / font Size:
Category Size: 38
Category Font Size: 16.5
Card Size: 120
Card Font Size: 16.5

10. Choose between closing Live's Browser after load or keeping it open.
Close_Live's_Brows | Keep_Open

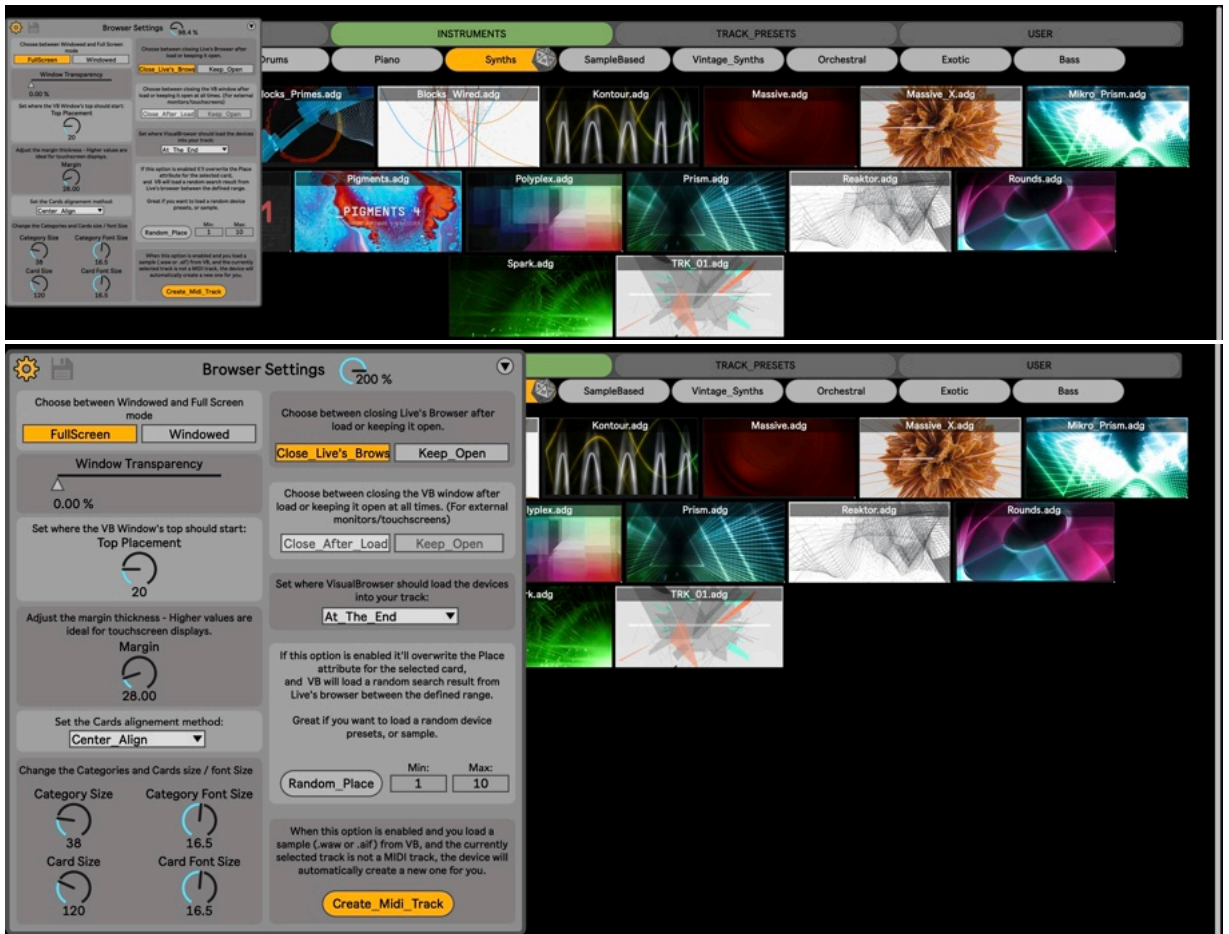
11. Choose between closing the VB window after load or keeping it open at all times. (For external monitors/touchscreens)
Close_After_Load | **Keep_Open**

12. Set where VisualBrowser should load the device into your track:
At_The_End

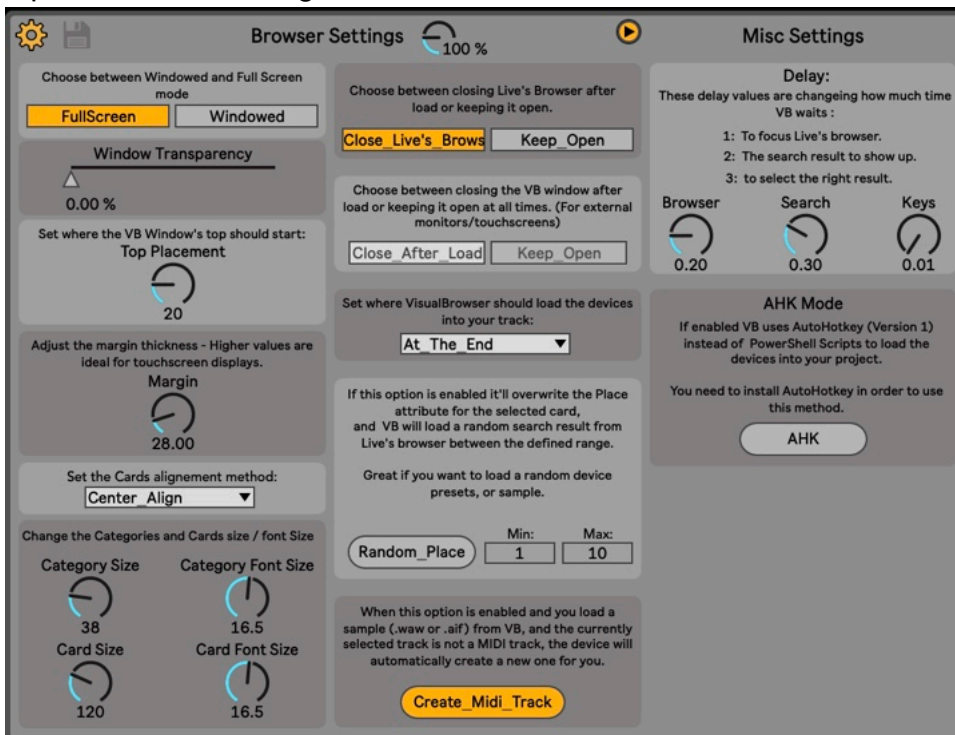
13. If this option is enabled it'll overwrite the Place attribute for the selected card, and VB will load a random search result from Live's browser between the defined range.
Great if you want to load a random device presets, or sample.
Random_Place | Min: 1 | Max: 10

14. When this option is enabled and you load a sample (.wav or .aif) from VB, and the currently selected track is not a MIDI track, the device will automatically create a new one for you.
Create_Midi_Track

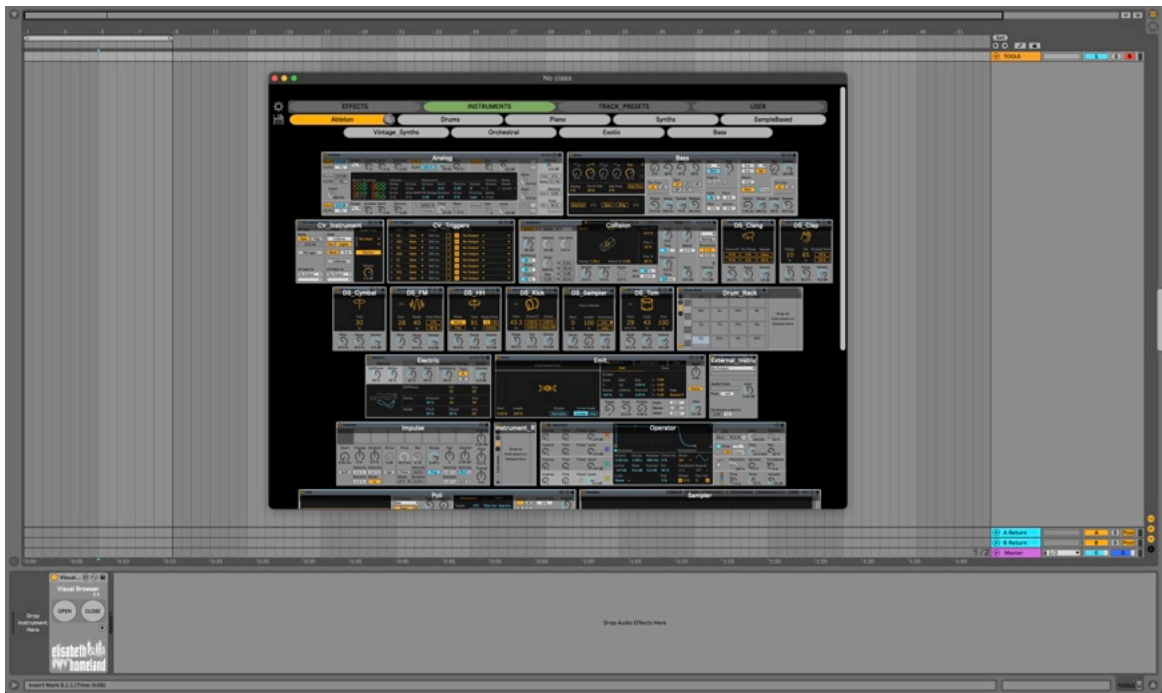
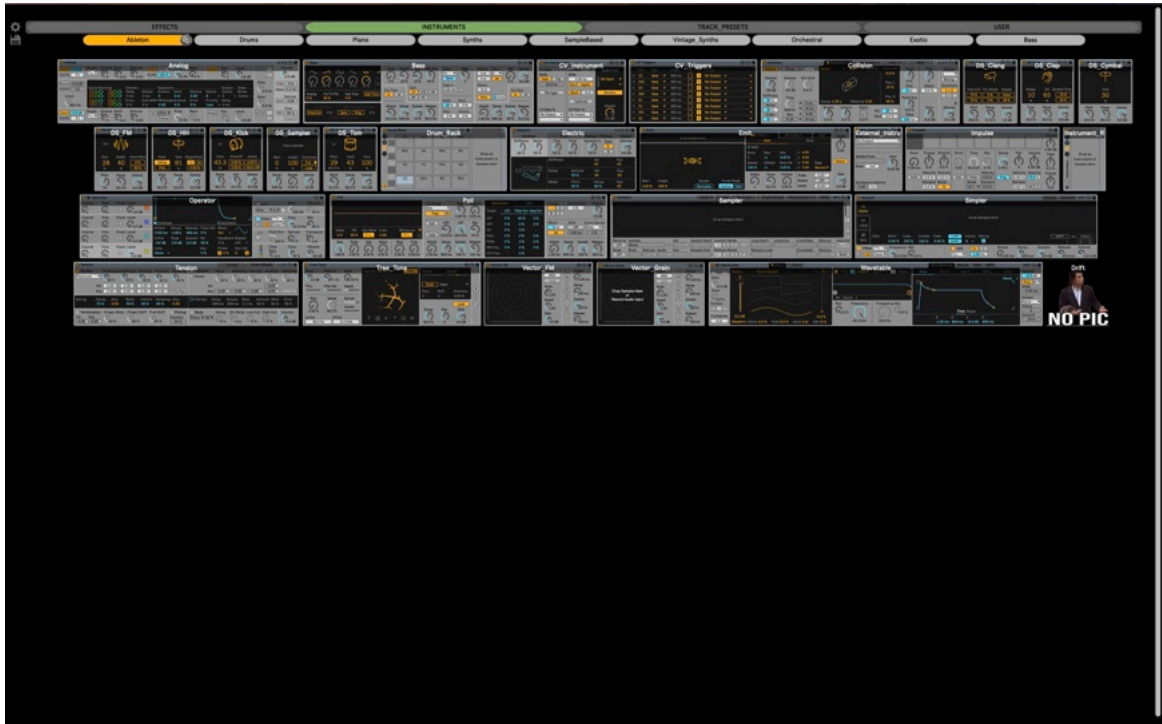
1. Close the settings panel, or Switch to the Layout Preset panel.
2. Change the size of the Settings panel.



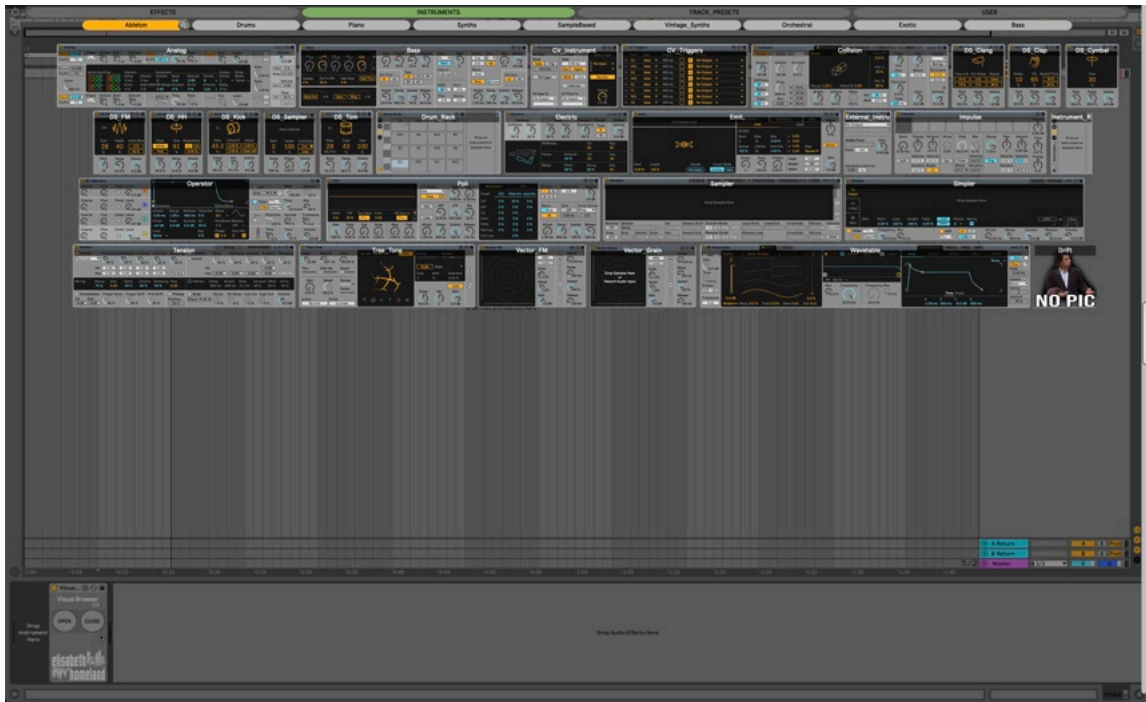
3. Open the Misc settings section.



4. Choose between Windowed, and FullScreen mode.



5. Change the Main Window's transparency (only available in FullScreen mode). (Currently it doesn't work on Windows.)



6. Set where the Main Window's top should Start.



- Adjust the margin thickness – Higher values are ideal for touchscreen displays.



- Set the Cards alignment method:
-Left Aligned



-Center Aligned



-Distribute Horizontally

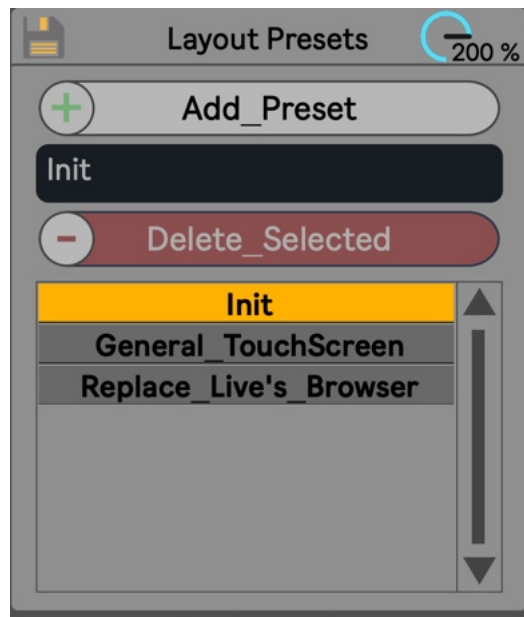


- Set the size of the Categories, Cards and they text.



- You can decide if you want to close Live's browser after you load something from VB or keep it open.
- You can decide if you want to close VB after you load something from it, or reopen it afterwards. (only available in Windowed mode.)
- Set where VisualBrowser should load the cards (devices) into your track. (at the end, before selected, after selected).
- If this option is enabled it'll overwrite the Place attribute for the selected card, and VB will load a random search result from Live's browser between the defined range. Great if you want to load a random device presets, or sample. (Combine it with the [Dice](#) feature. :))
- When this option is enabled and you load a sample (.wav or .aif) from VB, and the currently selected track is not a MIDI track, the device will automatically create a new one for you.

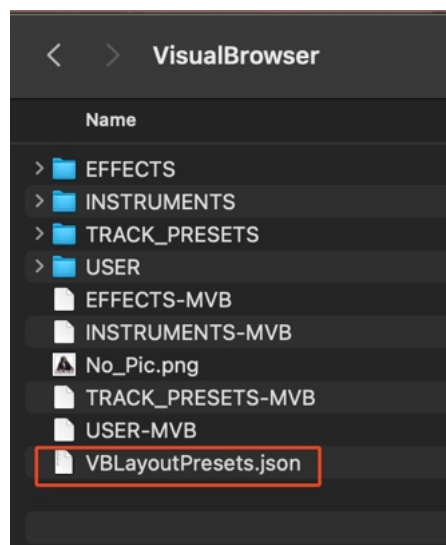
LAYOUT PRESETS



You can save custom layouts for the VB window and quickly apply them. (For example one for FullScreen mode, one for your Ipad, or to ReplaceLive's browser... or basically anything you came up with.)

When you add a preset it'll save the state of every parameter in the settings panel. (except the Misc settings.)

These presets are saved as a .JSON file in your VisualBrowser folder, so you can move it from one computer to another.






MISC SETTINGS

Delay:

Delay:
These delay values are changing how much time
VB waits :

- 1: To focus Live's browser.
- 2: The search result to show up.
- 3: to select the right result.

| | | |
|---|--|---|
| Browser  0.20 | Search  0.30 | Keys  0.01 |
|---|--|---|

Change these values to optimize the performance of the Card loading to your system.

VisualBrowser works like that:

If you click on any Card,

1. it'll focus on Ableton Live's main window,
2. then press the shortcut to open the browser
3. write the name of the card into the browser's search field,
4. it'll press the down button as many times as you specified in the `///PLACE` attribute
5. and finally it'll load it into your project, then close your Browser.

between each step there needs to be a bit of a delay, But how much is necessary depends on your computer's processing power.

I predefined a relatively long delay time for each step to make sure it works out of the box for most people.

However you can fine tune it for your hardware in the advanced menu:

The **Browser** dial sets the delay after step 2. (it'll wait for the Browser to appear)

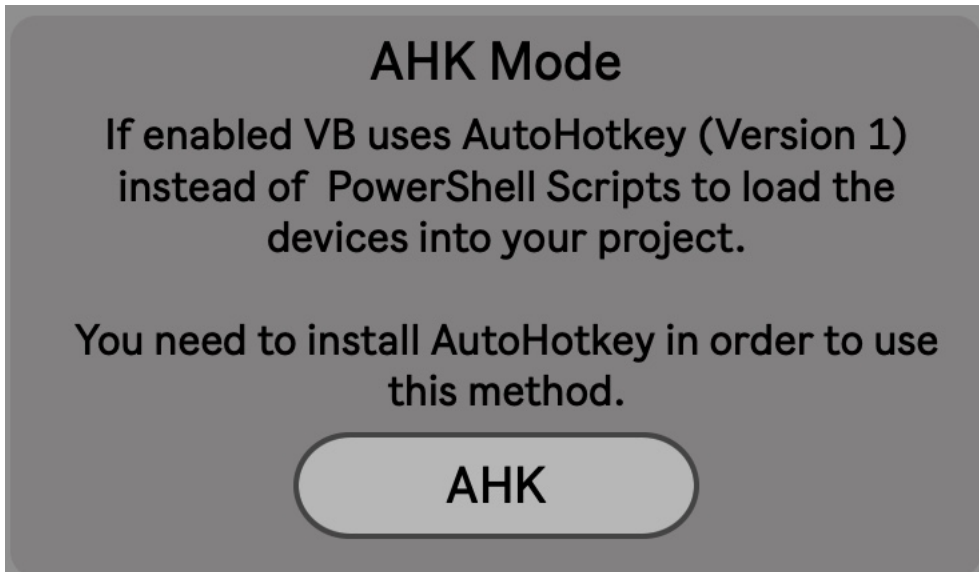
The **Search** dial sets the delay after step 3. (it'll wait for the result to appear)

The **Keys** dial sets the delay after step 4.

The dial's value is in seconds. (200ms, 200ms, 100ms)

For me setting the browser and the key's to 0.01 and the search to 0.4 works just fine. play around with it. 😊

AHK mode.



AHK Mode

If enabled VB uses AutoHotkey (Version 1) instead of PowerShell Scripts to load the devices into your project.

You need to install AutoHotkey in order to use this method.

AHK

If you're using Windows with certain languages like Korean, there's a chance that the device will not work properly when you try to load the devices in your project. In that case you can enable AHK mode.

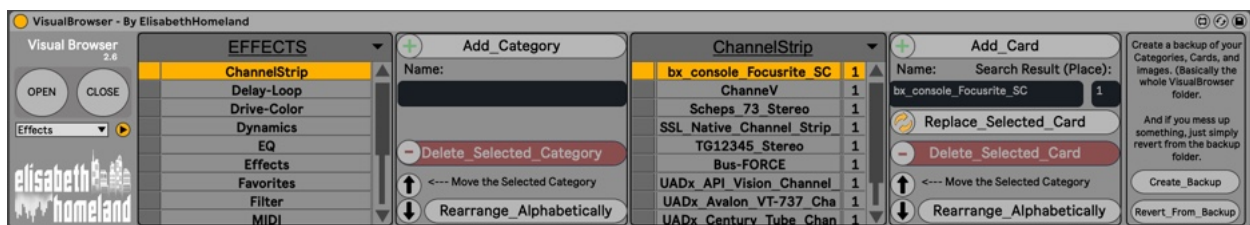
If you're using this option the device will load the devices into your project using AutoHotkey, instead of a PowerShell script .

It's important that if you want to use this mode, you need to install AutoHotkey first. (Version 1. not Version 2 or later.

USING THE EDITOR:

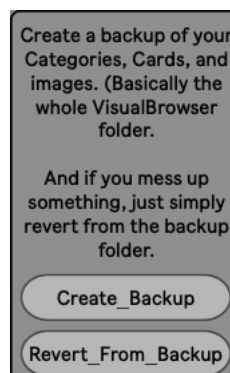


Press the → button to open up the advanced settings.



IMPORTANT: Everything you do in this editor is instantaneous and permanent.

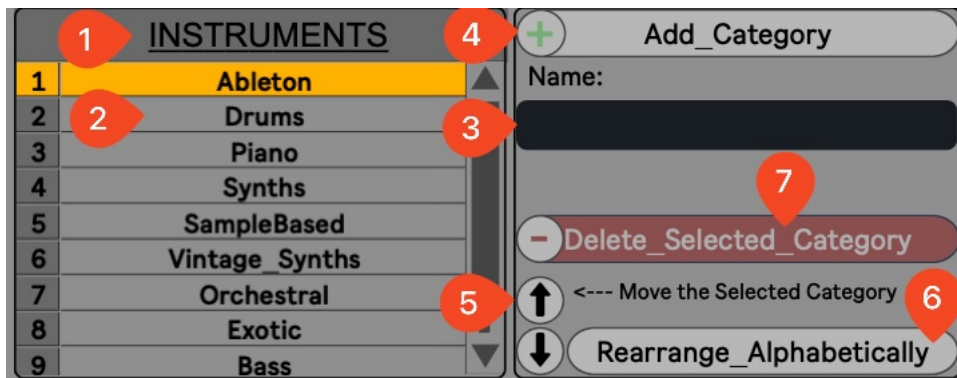
If you rearrange something, it stays that way, if you delete something, it's deleted! So always Create backup before you start to edit!!



When you Press the „Create_Backup” button it'll create a copy of your current VisualBrowser folder into your Documents directory called: VisualBrowser_Backup. If you already have a Backup it'll overwrite it.

When you press the „Revert_From_Backup” button it'll copy everything from your Backup folder, and overwrite your main VisualBrowser folder with it. (If you don't have a backup folder nothing happens.)

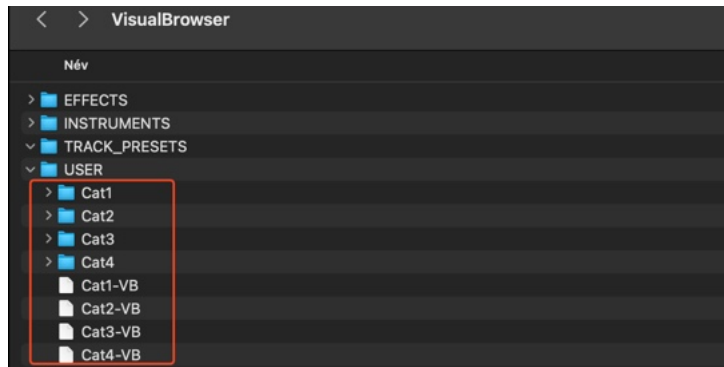
ADDING SUBCATEGORIES:



1. You can select the MainCategory you'd like to edit.
2. Here you see SubCategories of the selected MainCategory.
3. Type in the name of the new category you want to add.
You can also add multiple SubCategories at once if you separate multiple words with a comma. They'll be individually added when you press the „Add_Category” button.



4. Now if you press the „Add_Category” button it'll add the SubCategory (or Categories) to the list, and create a Folder, and a VB file at the selected MainCategory's path (VisualBrowser/USER in this case) with the same name.



5. With the „up” and „down” buttons you'll be able to move up or down the selected SubCategory to rearrange their order. (The SubCategories will show up in the main Window in this order.)
6. Also you can Rearrange everything Alphabetically with the „Rearrange_Alphabetically” button.
7. you can also delete the selected Subcategory with the „Delete_Selected_Category” button.

IMPORTANT:

This button will delete the selected SubCategory, and its VB file, and also Its folder too. Of course there's a prompt before you delete to prevent accidental presses, but take care!

ADDING CARDS:

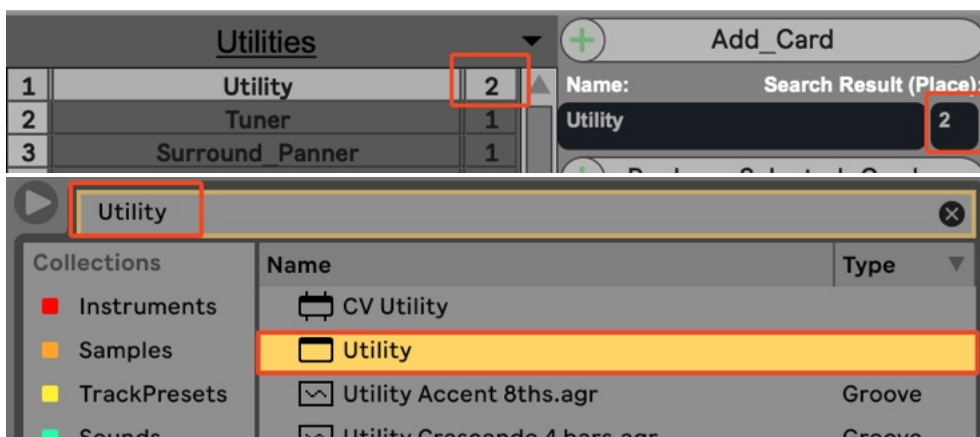


The second part is almost the same.

You can select the SubCategories on the top, and then put Card's into them.

A few differences:

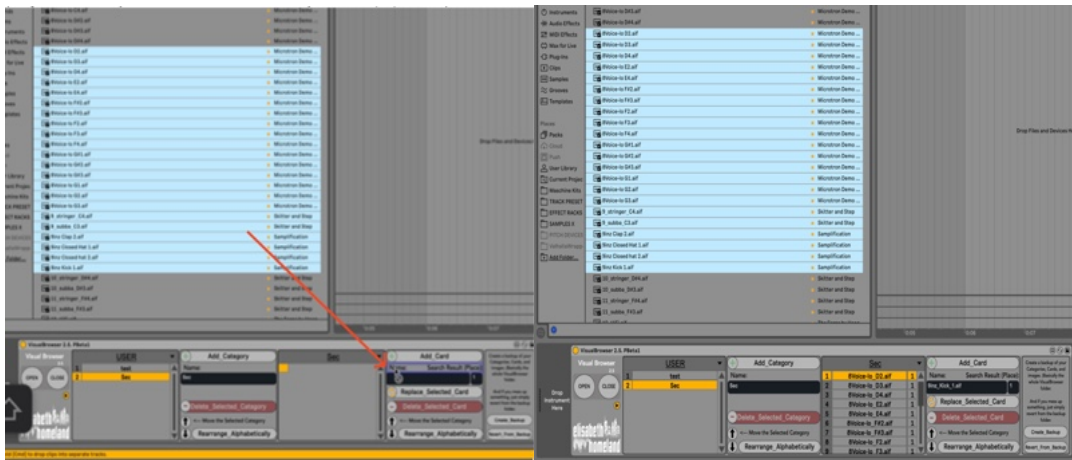
1. When you add a card you can also set their „place” too.
This will tell the Visual Browser Which Search Result you want to load from the browser.



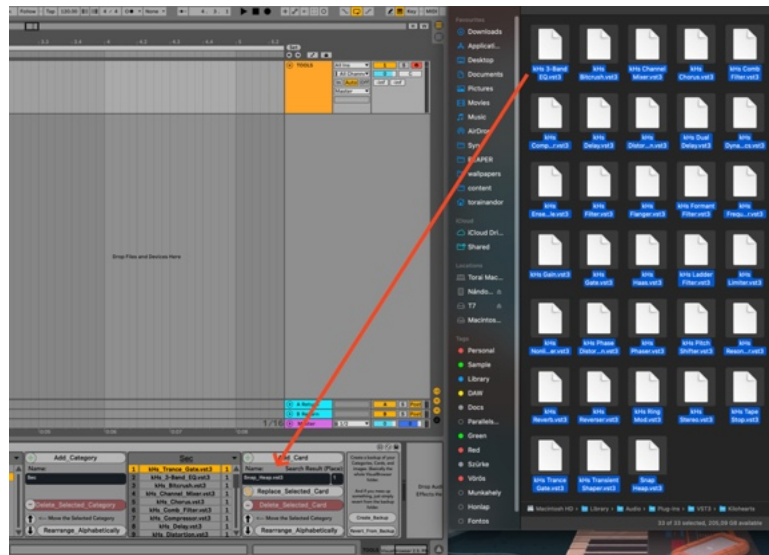
2. you can also replace the selected card, with the „Replace_Selected_Card” button.
(If you need to change the name of the card, or it's place: just select a card from the list)



3. It's possible to select (even multiple) things from Live's browser and drop it into the editor to automatically create new cards:
(Drag the files directly to the "Name: Place" text where you see the purple frame)



Sadly you can't drop VST's directly from Live's browser into the editor, but you can drop VSTPresets, or the actual files themselves from Finder/File Explorer.



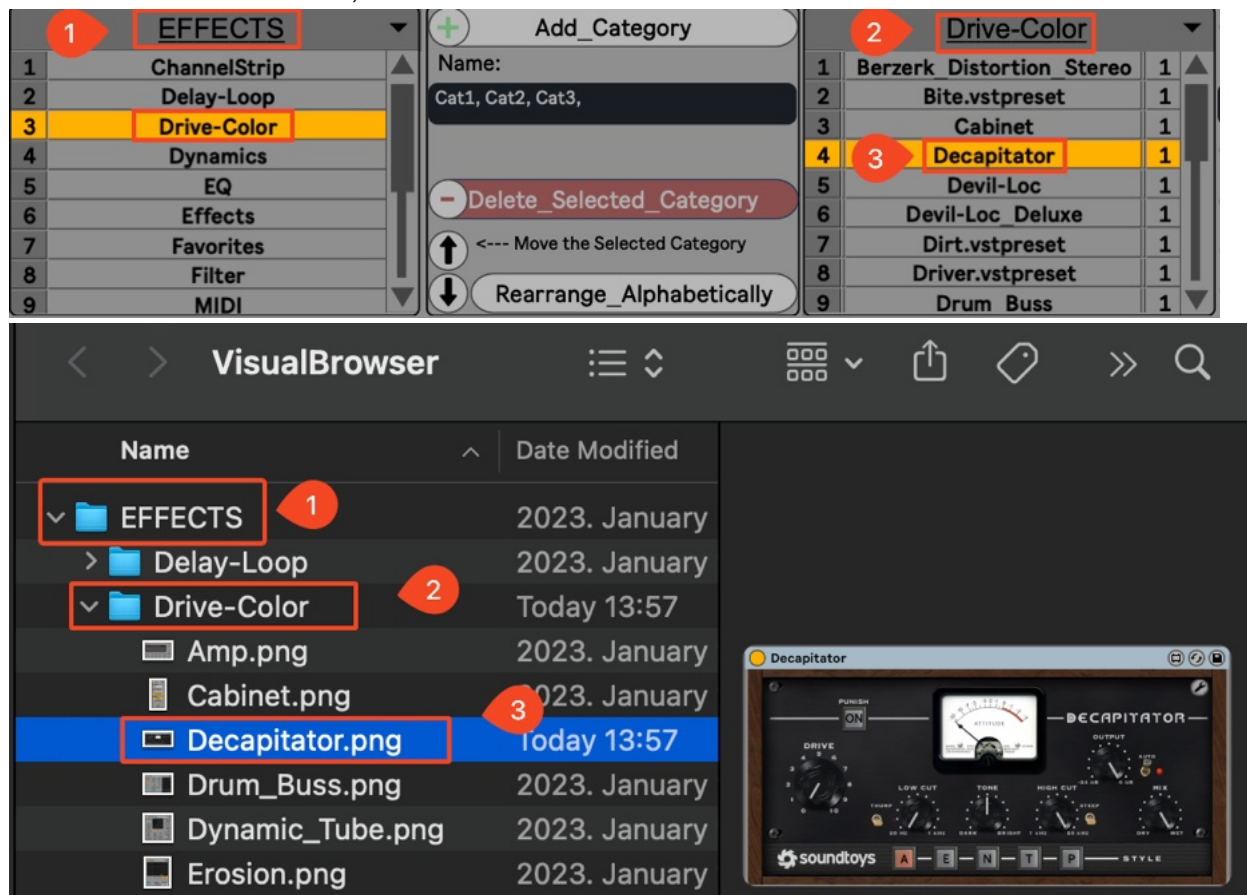
ADDING PICTURES TO CARDS:

Every SubCategory has its own Folder, and VB file with the corresponding name. In the VisualBrowser folder. (/Documents/VisualBrowser)

The cards it should load are stored in the VB file, and the pictures for those cards are in the Folder in PNG format.

So if you want to add a picture to let's say „Decapitator”

Create a screenshot of the plugin, and place it inside the corresponding folder with a same name as the Card, like this :



CONTACT:

If you have any questions or difficulties with the device feel free to write me at :

info@elisabethhomeland.com

Or you can find me in Twitter:

<https://twitter.com/ElisabethHom>

Have Fun! ☺

